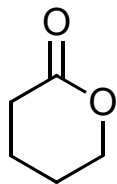


Synthesis Challenge # 52

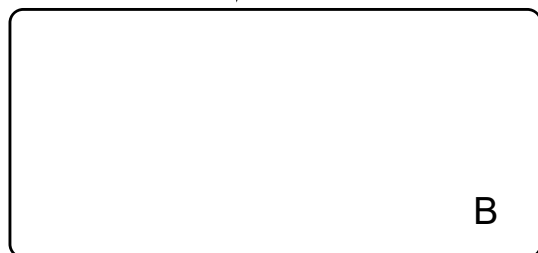
AG Wegner

14.07.2016



A

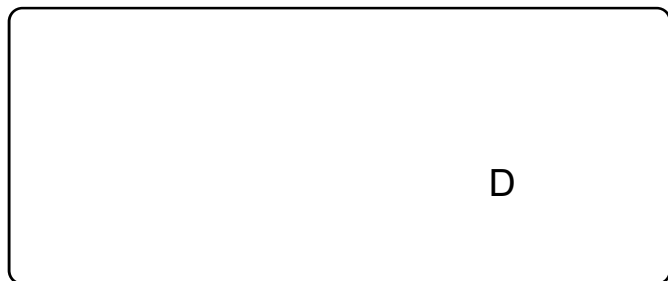
↓ 1-3



↓ 4-5



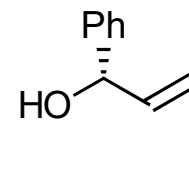
↓ 6-7



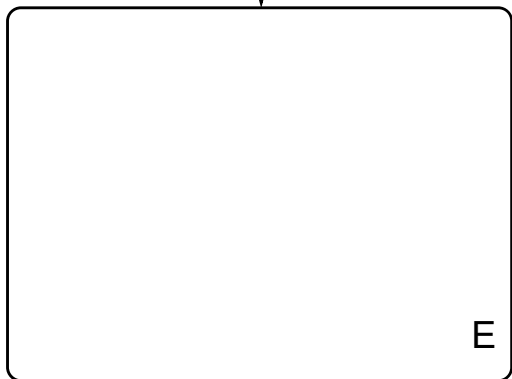
- 1) LDA, EtI, HMPA, THF, -78°C
- 2) cat H_2SO_4 , MeOH, rt
- 3) MEMCl, DIPEA, CH_2Cl_2 , rt

- 4) $\text{LiOH}\cdot\text{H}_2\text{O}$, THF- H_2O
- 5) I, EDCI $\cdot\text{HCl}$, DMAP, rt, 23°C

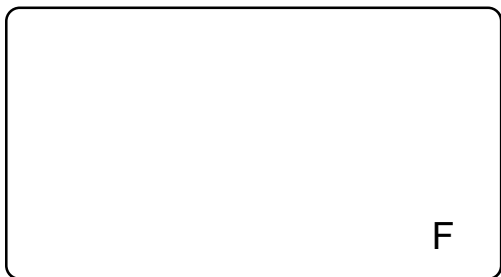
- 6) KHMDS, toluene, -78°C , then TMSCl, -78°C
- 7) TMSCHN $_2$, MeOH, CH_2Cl_2 , 0°C to rt



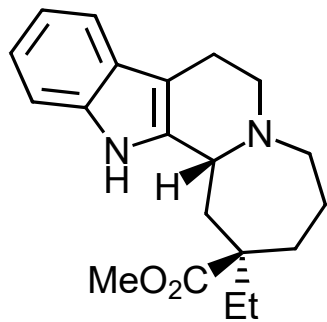
8-9



10-11



12-13



8) AcCl, MeOH, rt
9) NsNH₂, PPh₃, DEAD, THF, rt

10) O₃, CH₂Cl₂, -78°C, Me₂S, rt
11) II, DMF, K₂CO₃, rt

12) PhSH, Cs₂CO₃, MeCN, rt
13) TFA, rt

