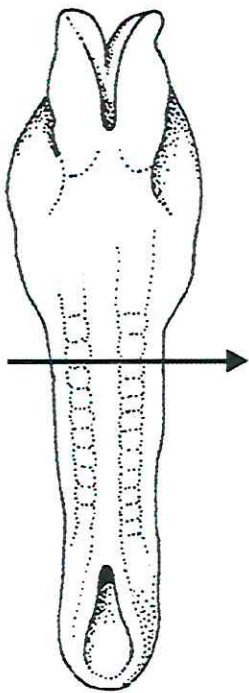
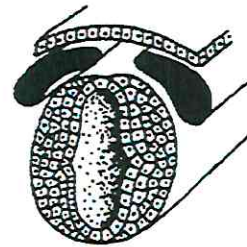
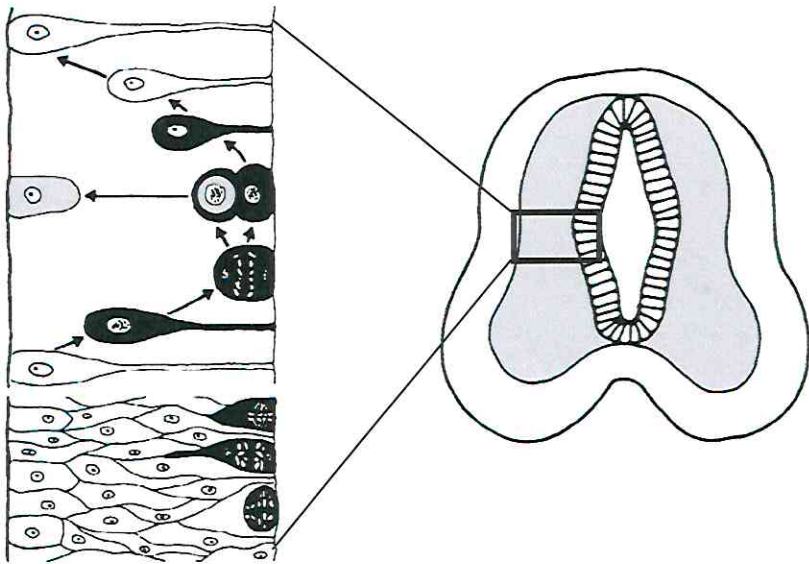
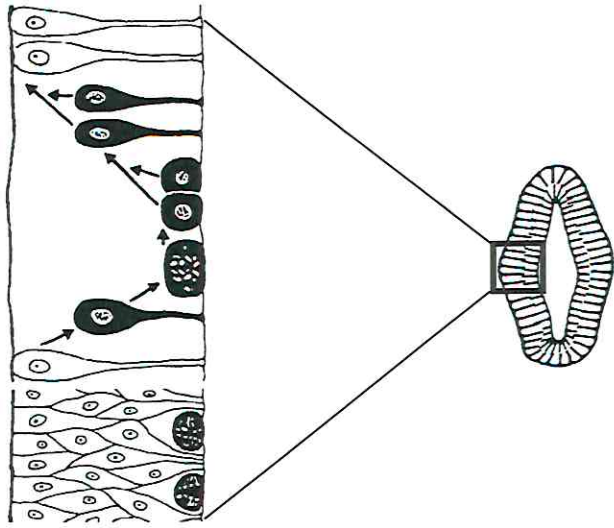


21 Tage

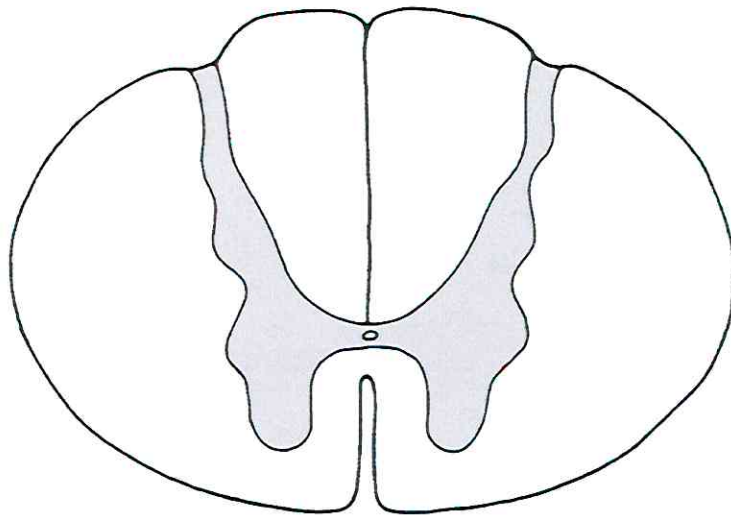


23 Tage

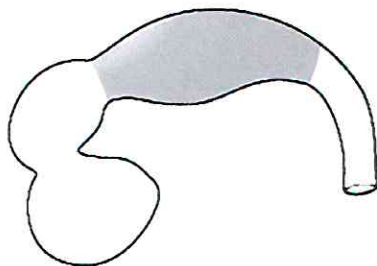
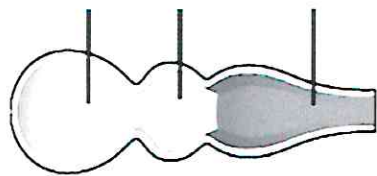
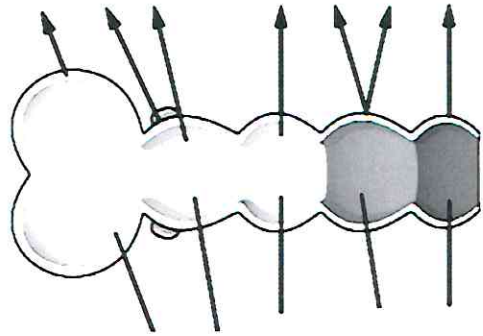
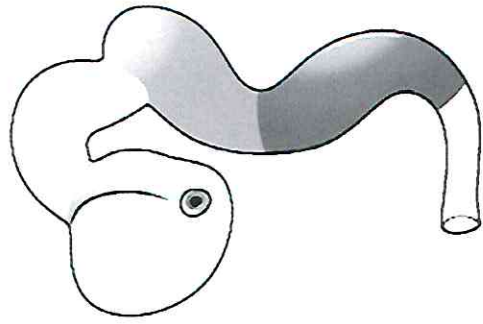




dorsal / posterior



ventral / anterior

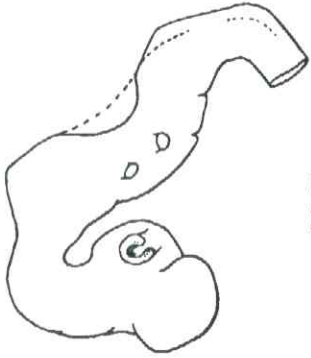




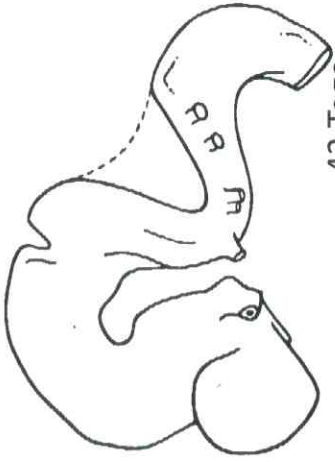
23 Tage



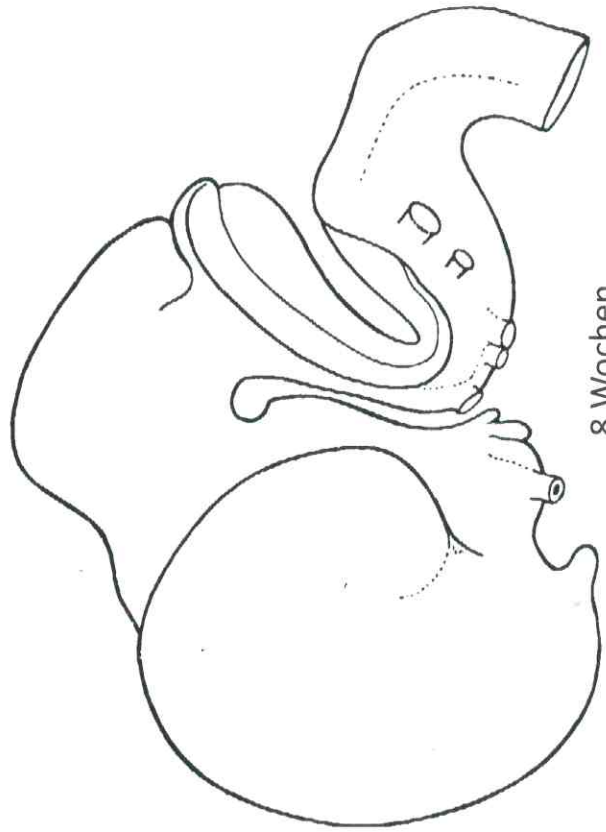
30 Tage



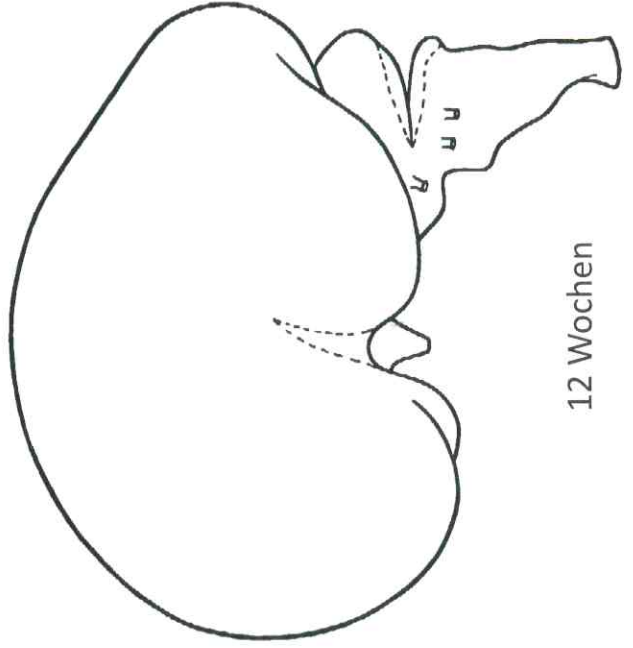
33 Tage



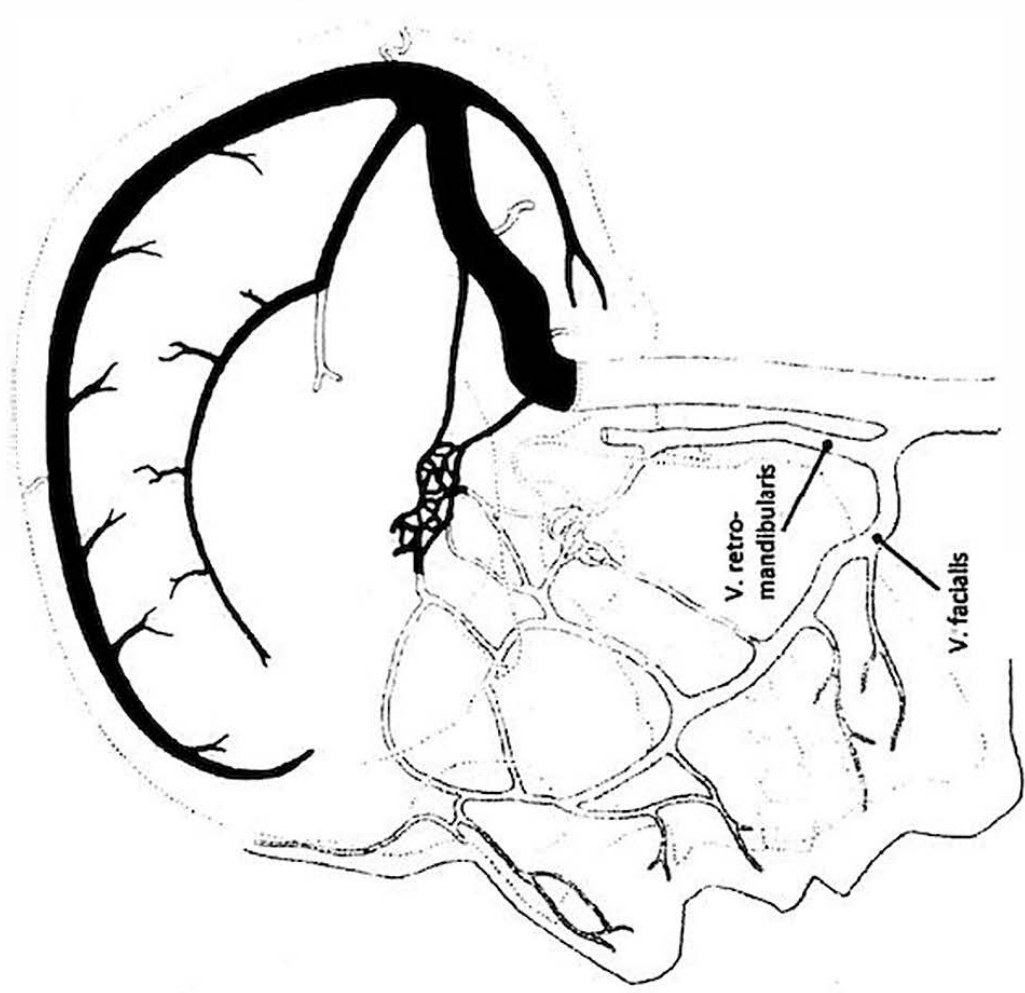
42 Tage

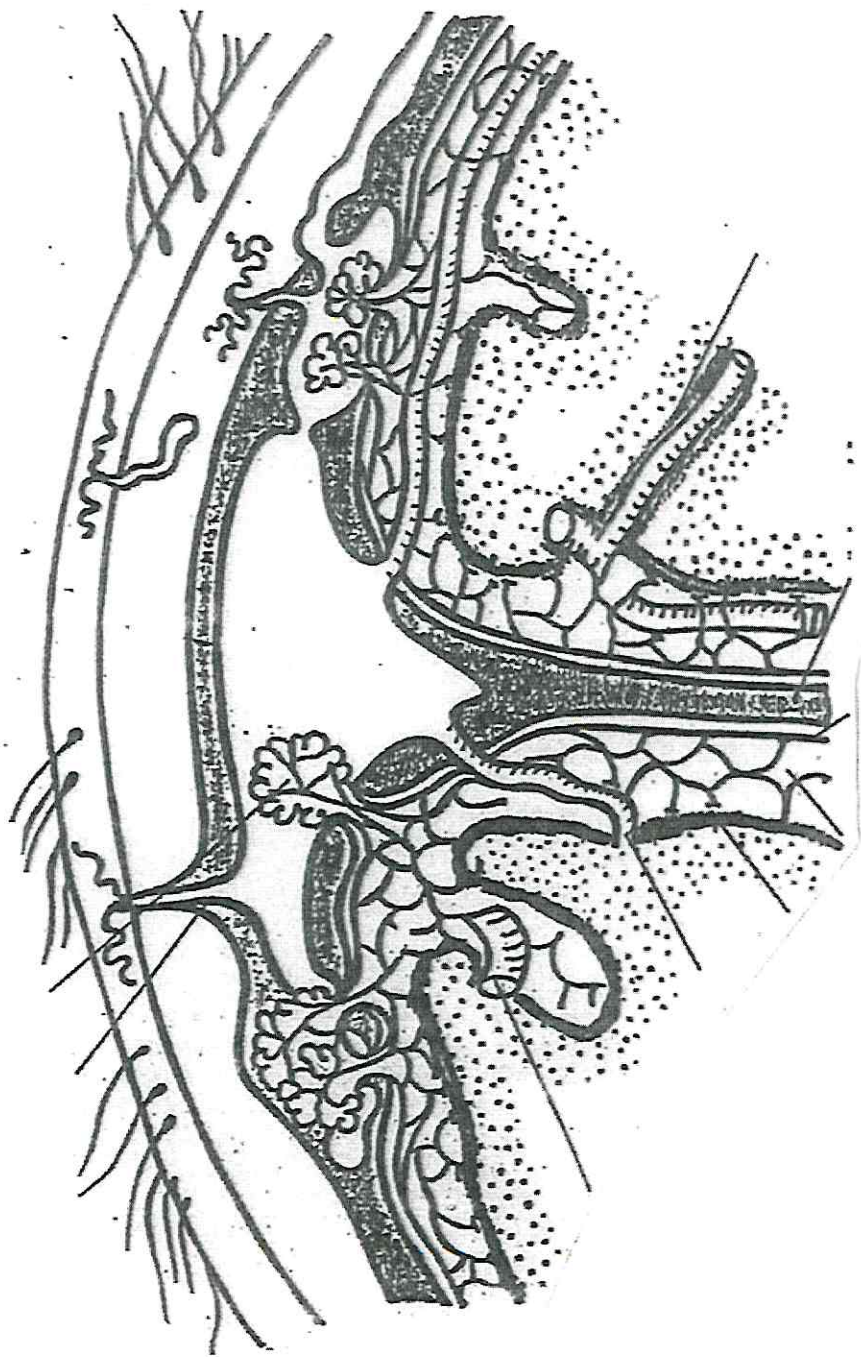


8 Wochen

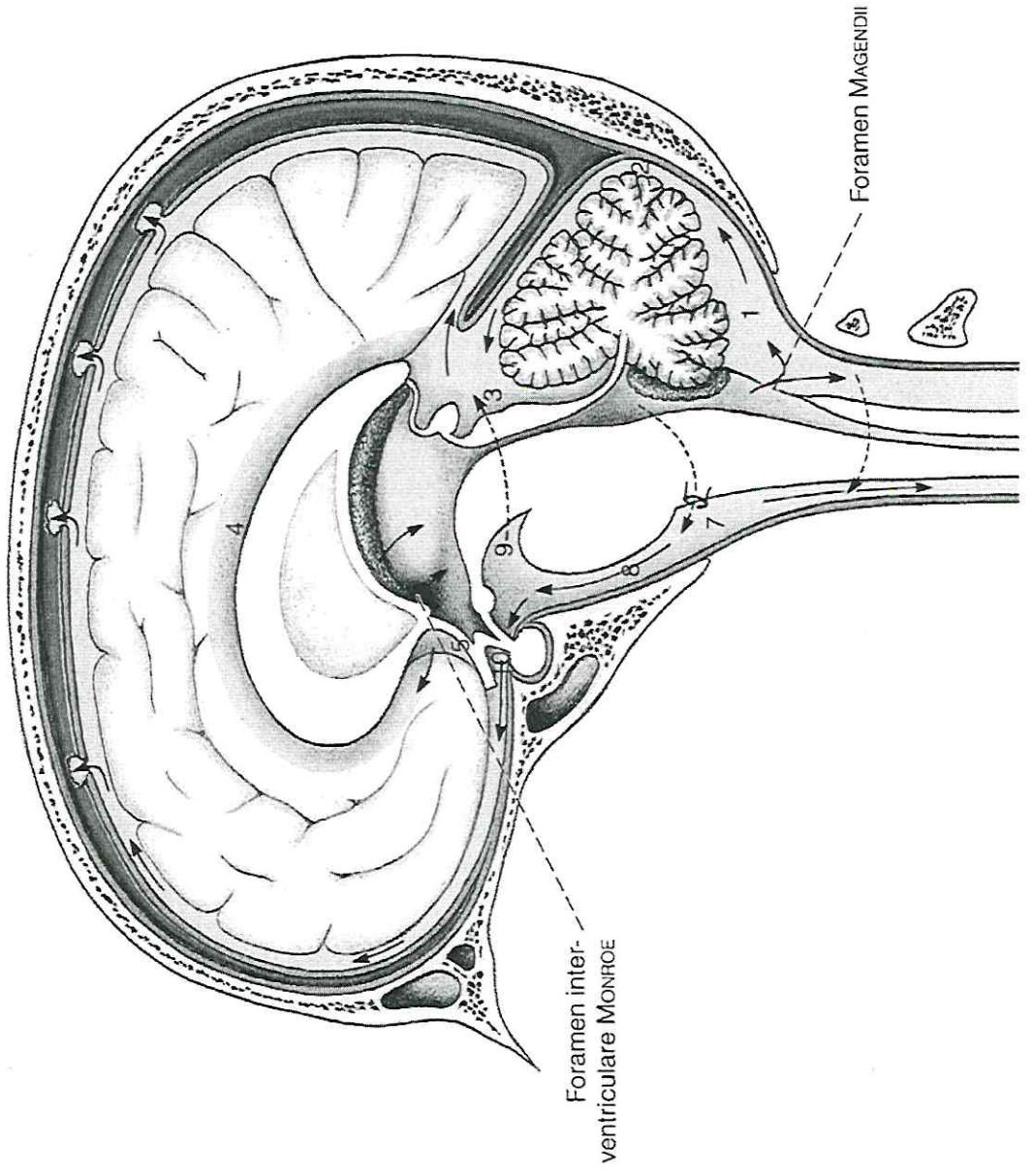


12 Wochen

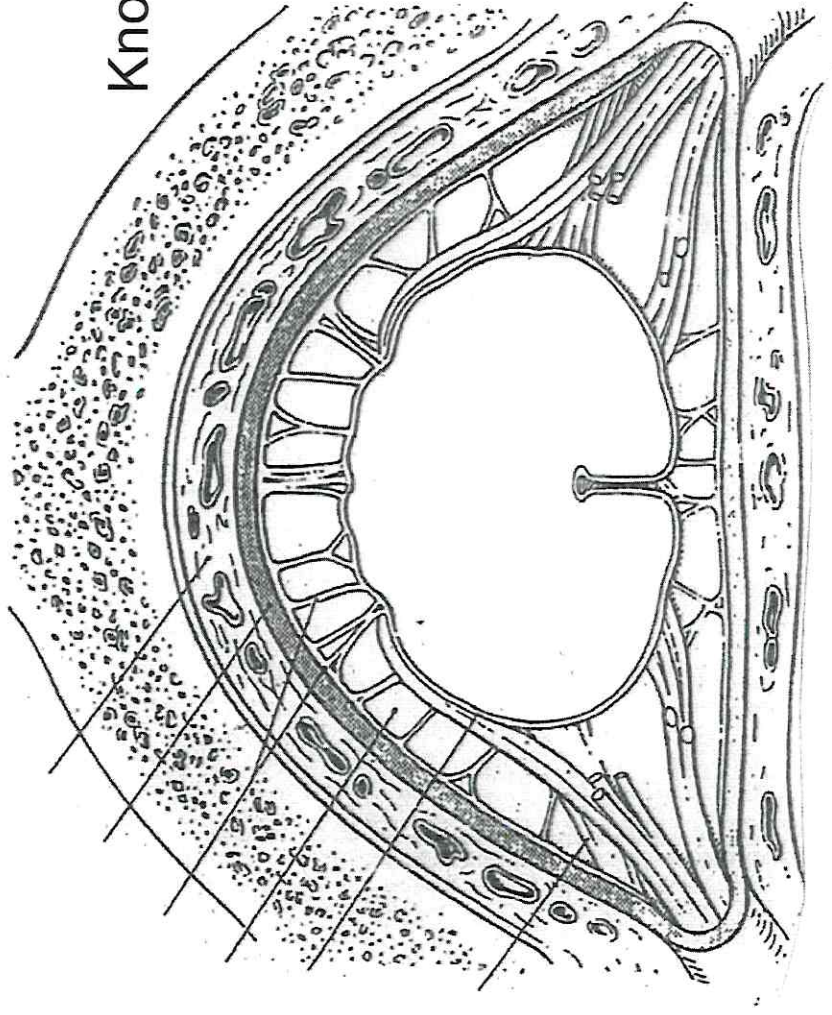




Liquorräume

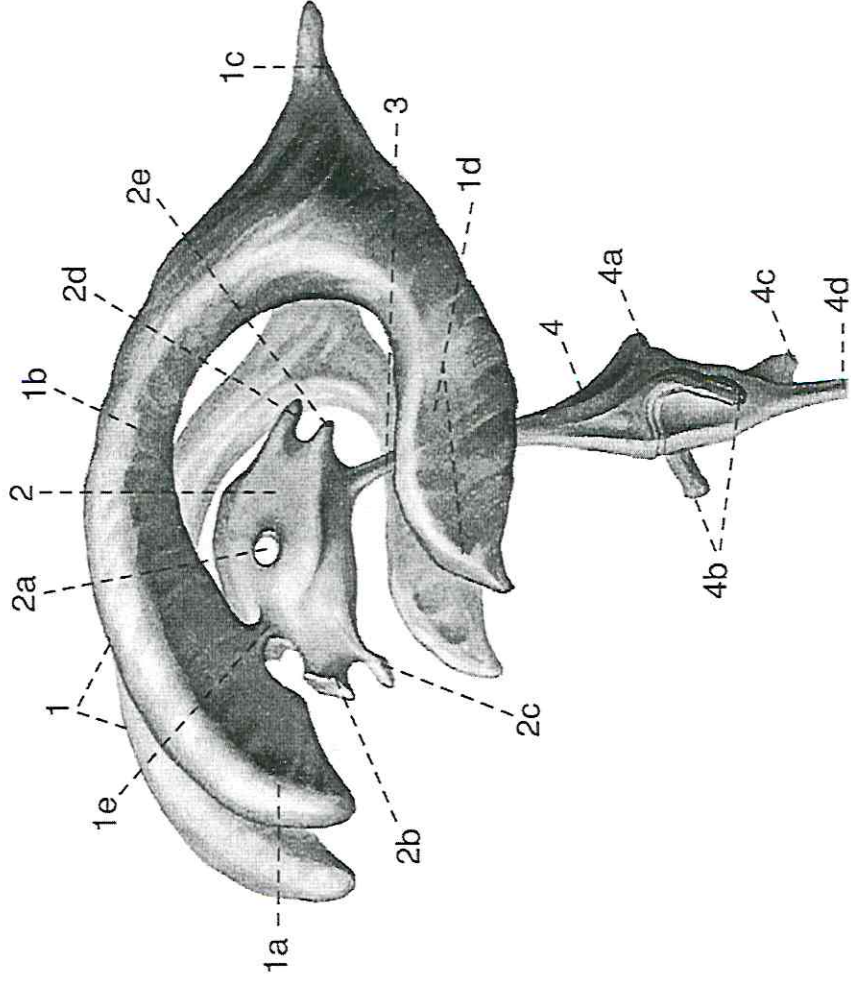


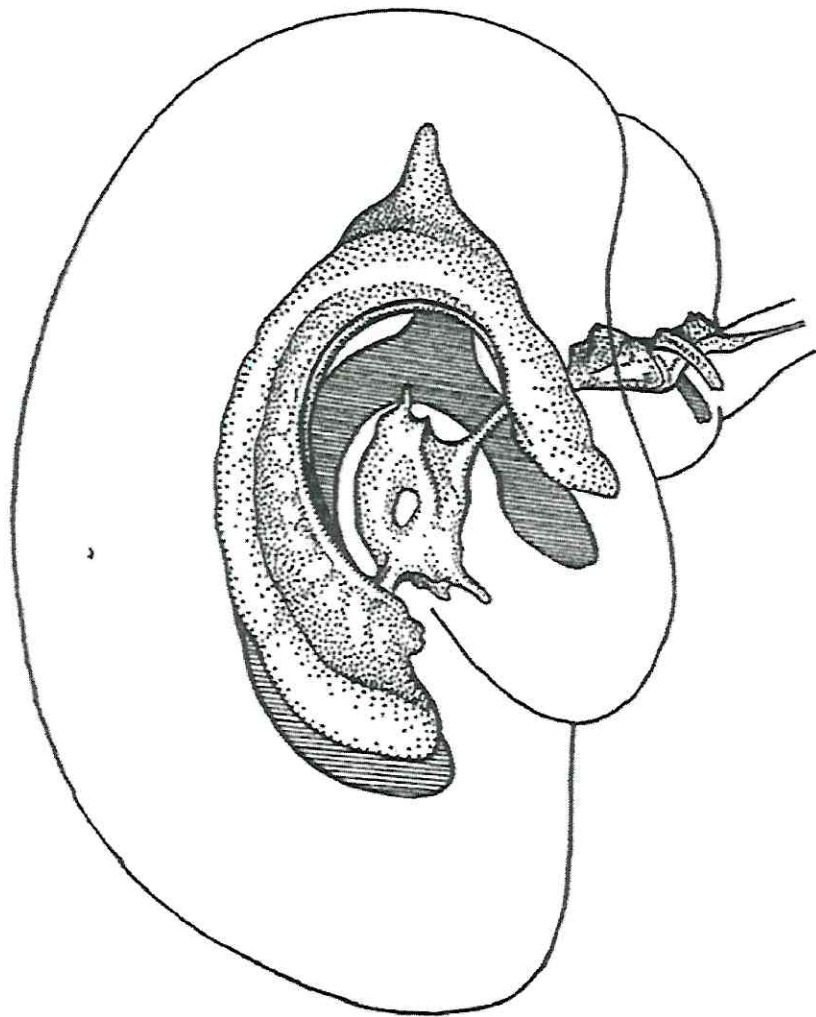
Knochen (Wirbel)



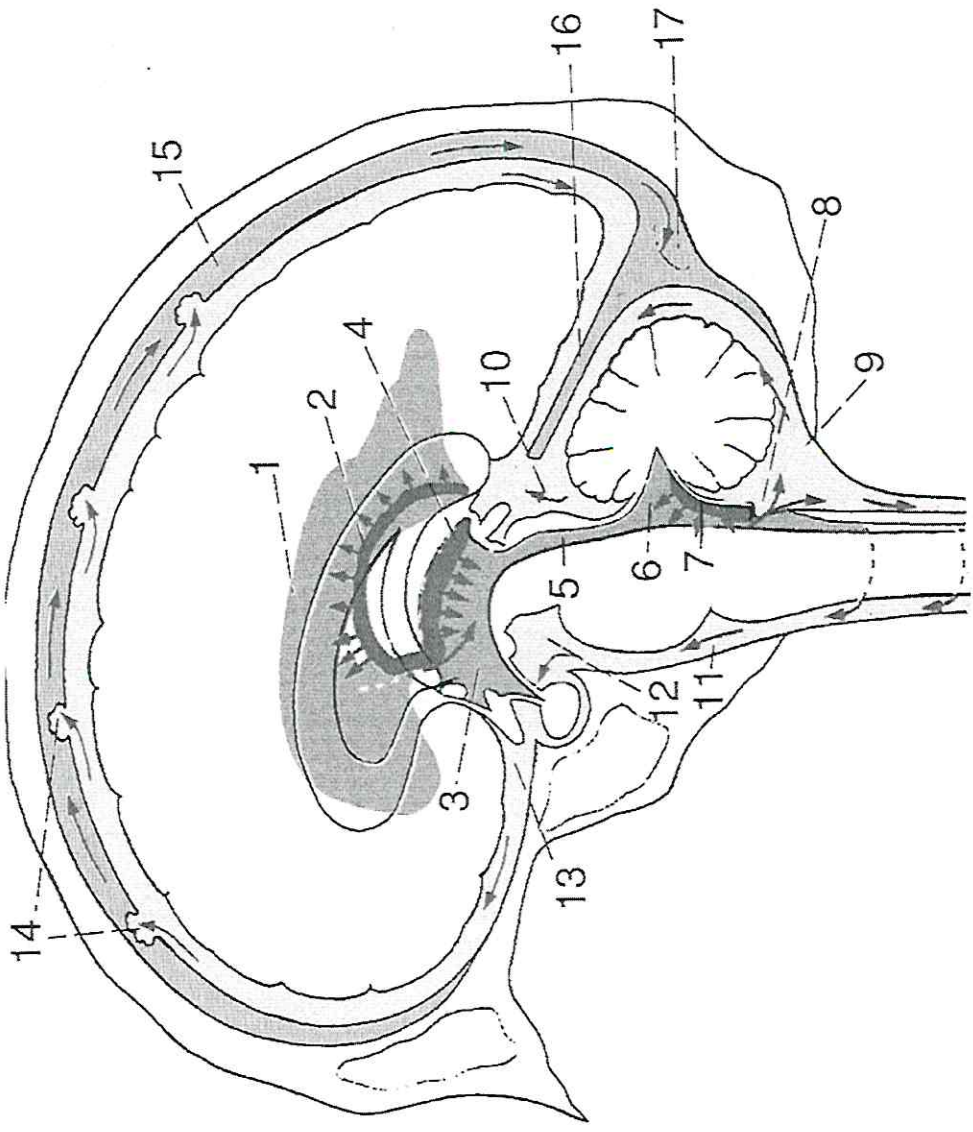
Innere Liquorräume = Ventrikel mit ihren Verbindungen

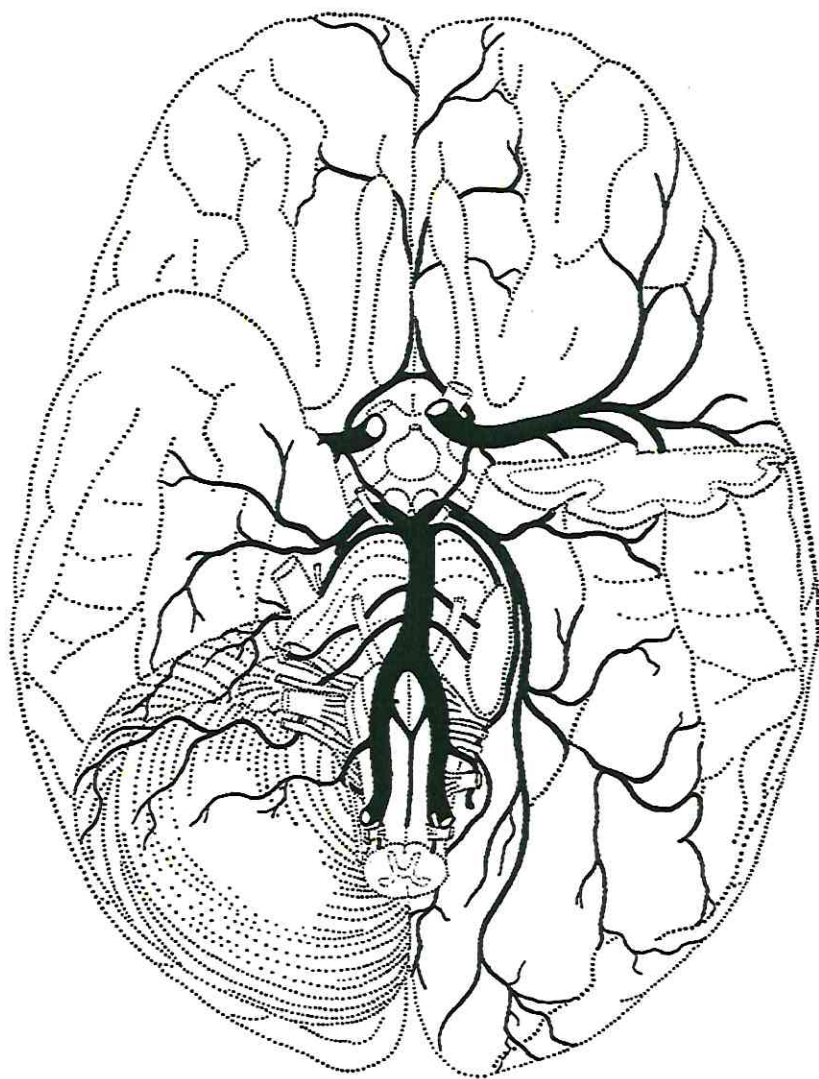
10 : Liquor-, Ventrikelsystem und Hirnhäute

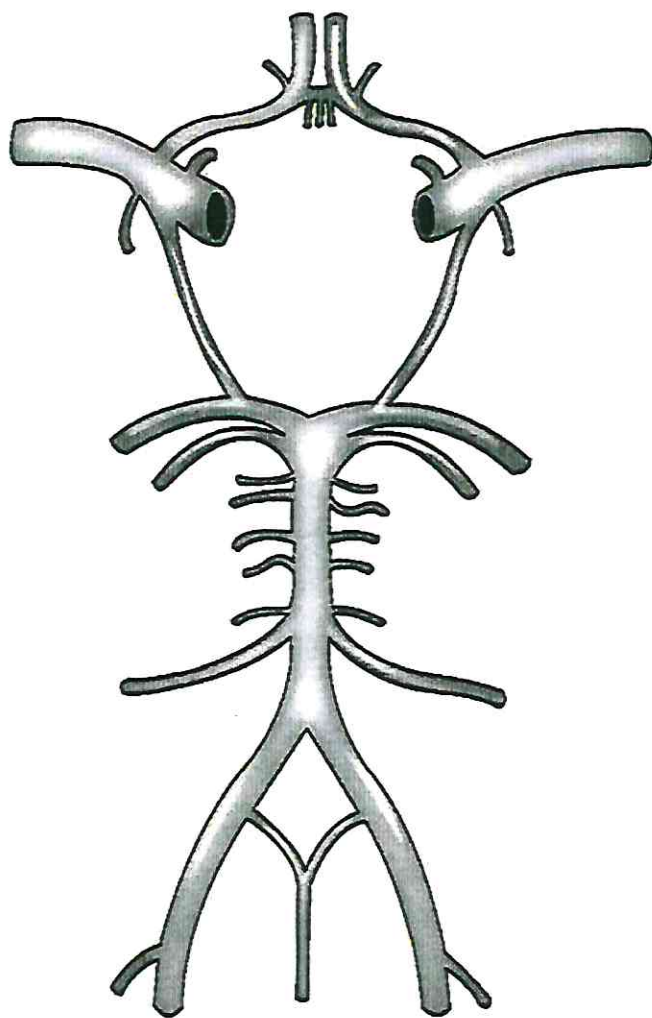


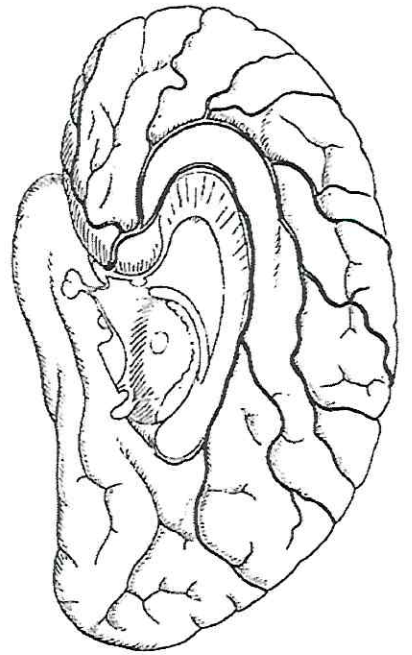
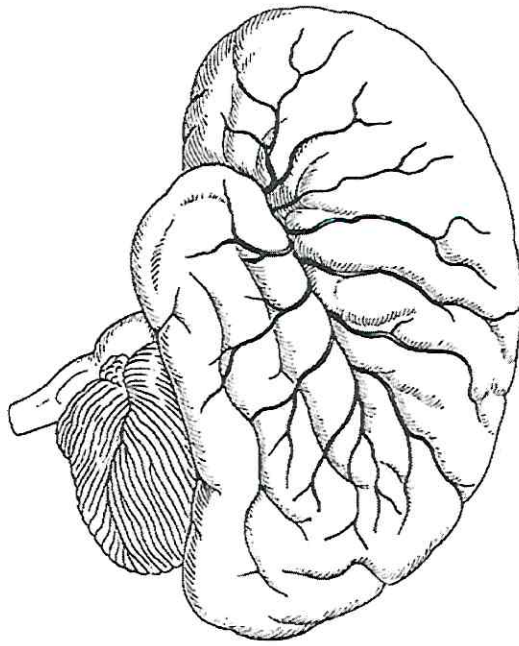
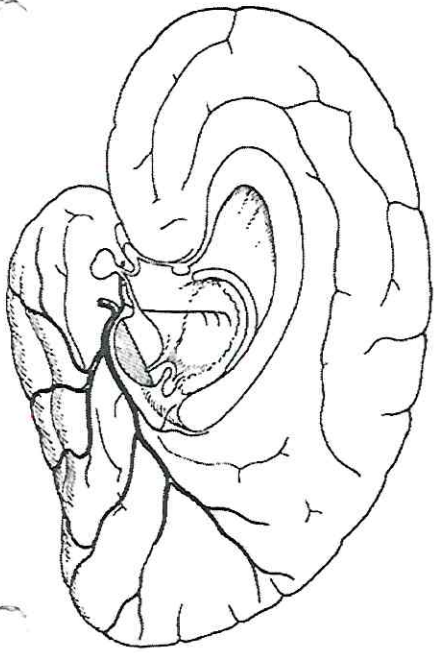


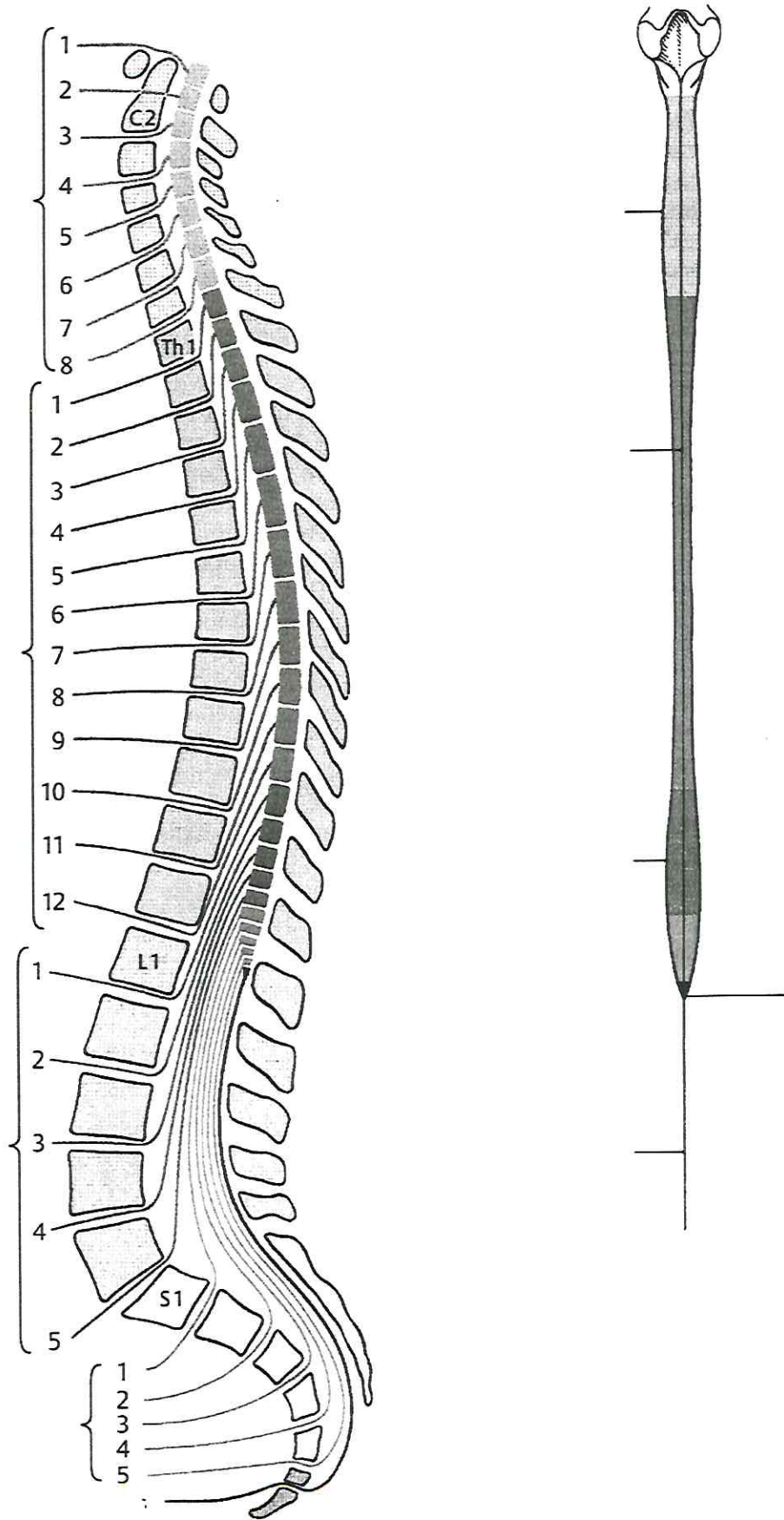
Liquorzirkulation und – zisternen des SAR

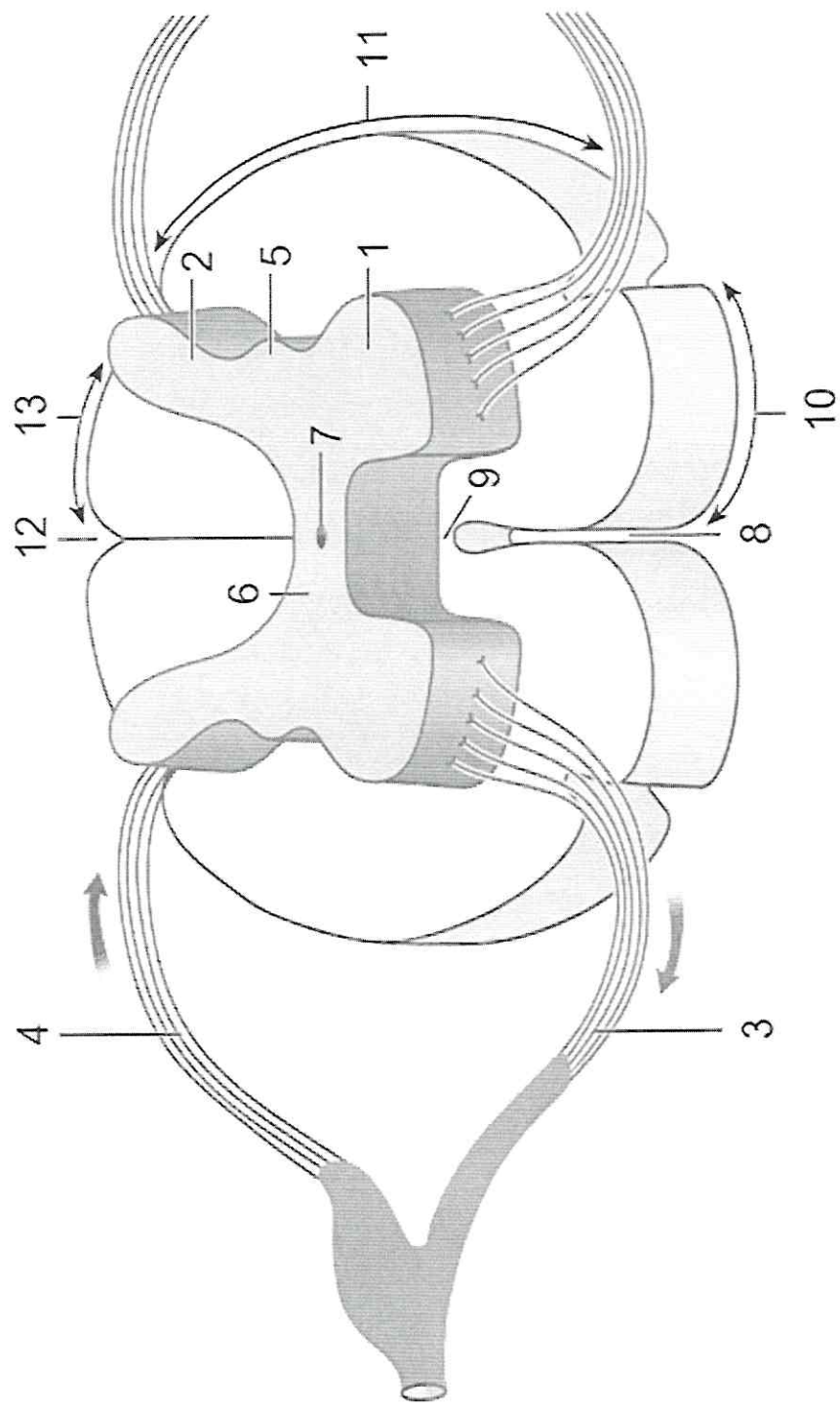


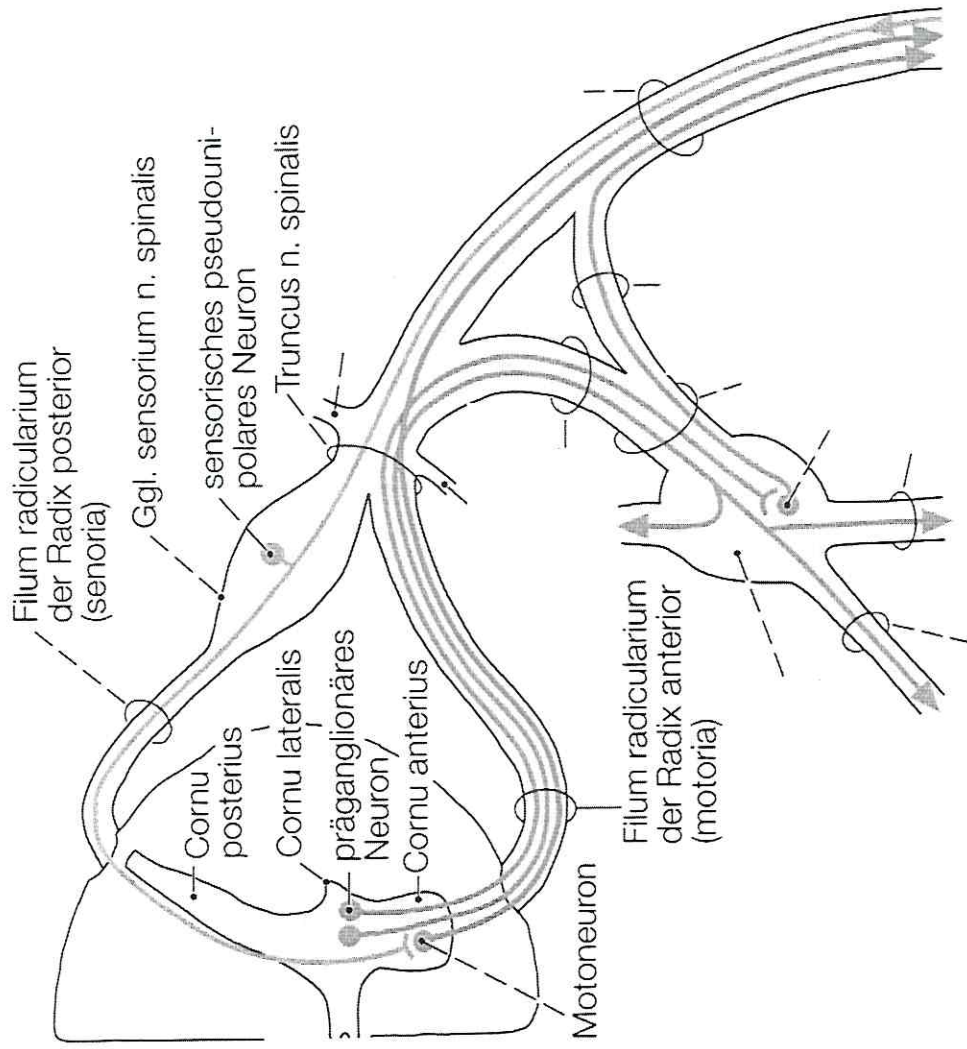




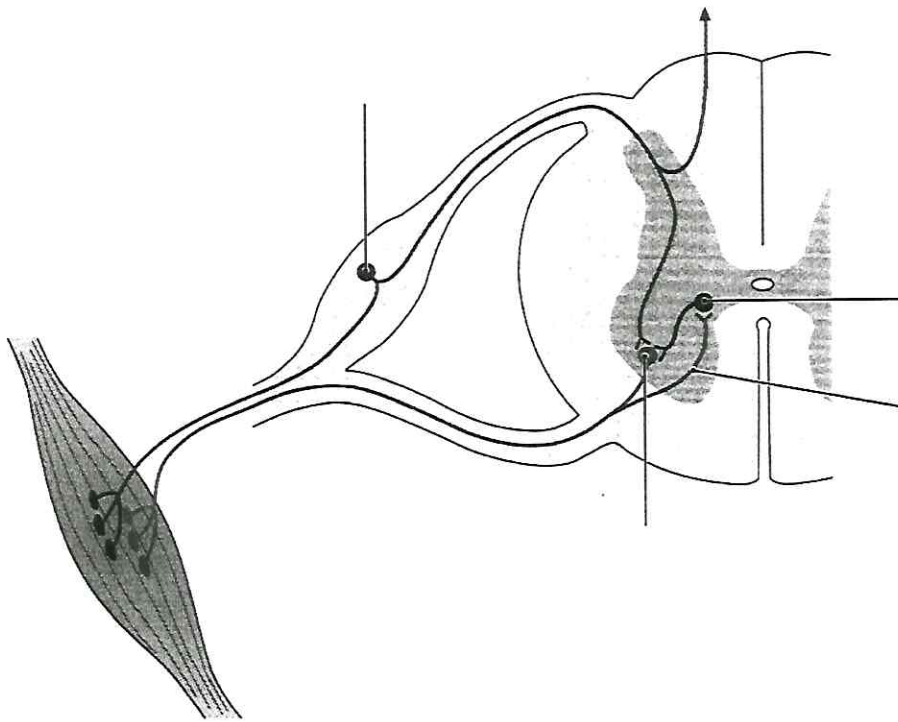




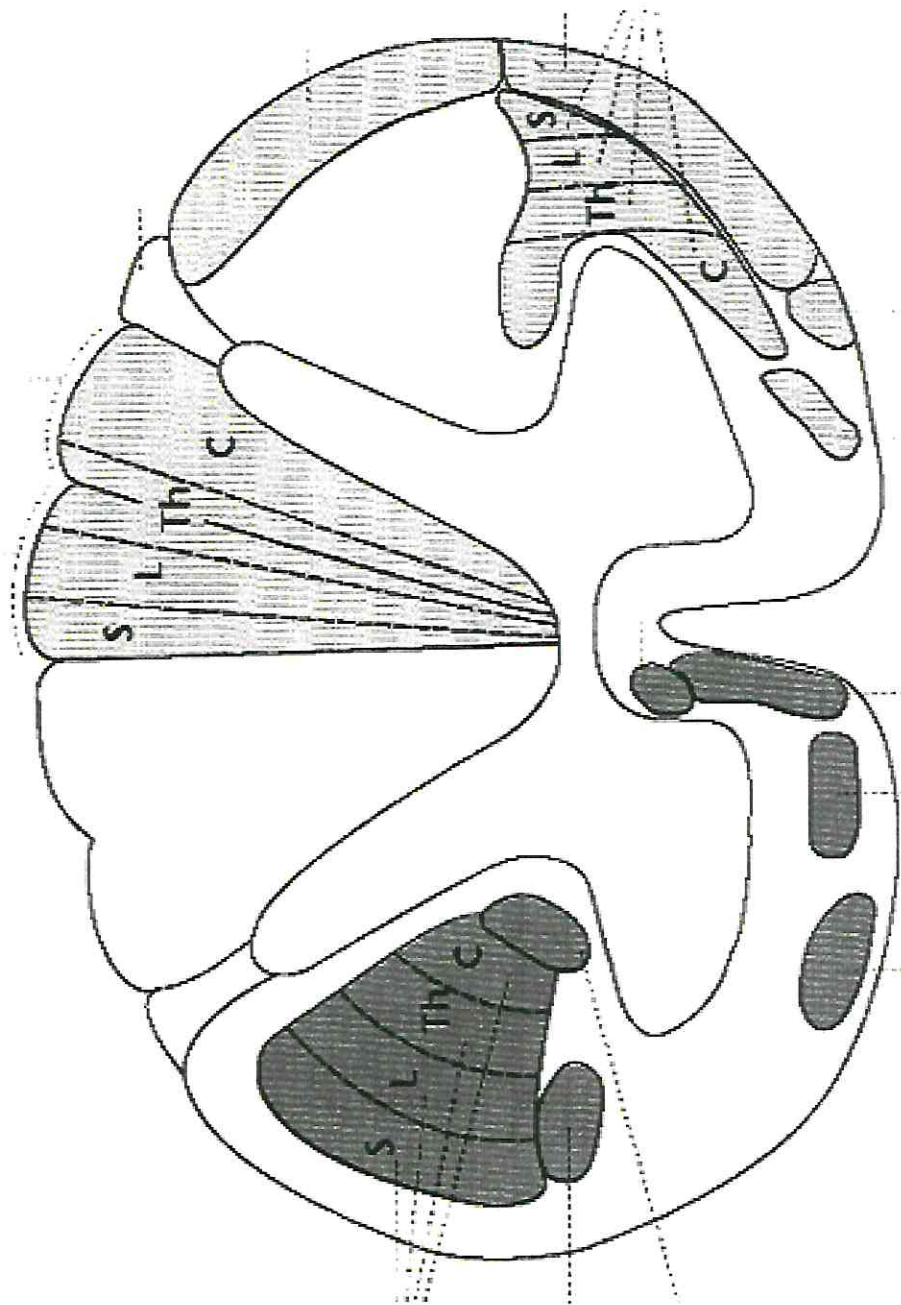


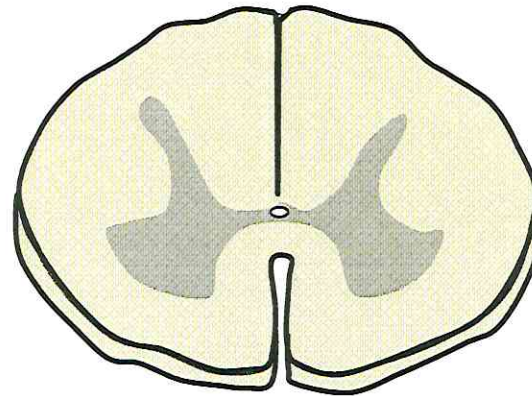
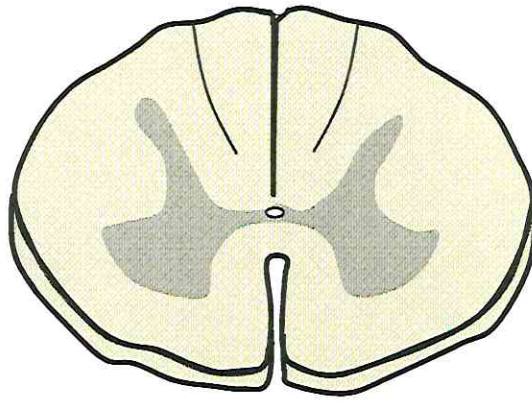


aus Benninghoff, Dreckhahn: Anatomie. Makroskopische Anatomie, Histologie, Embryologie, Zellbiologie, Auflage 2004, Band 2., Elsevier, p.293

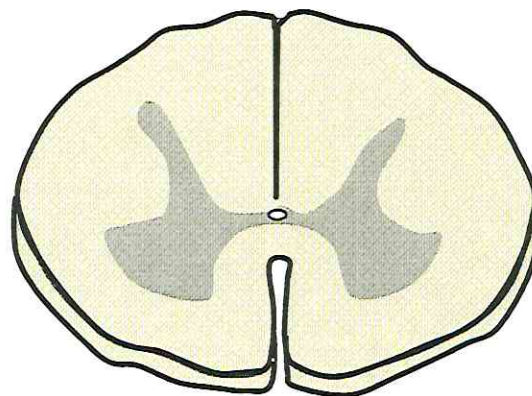
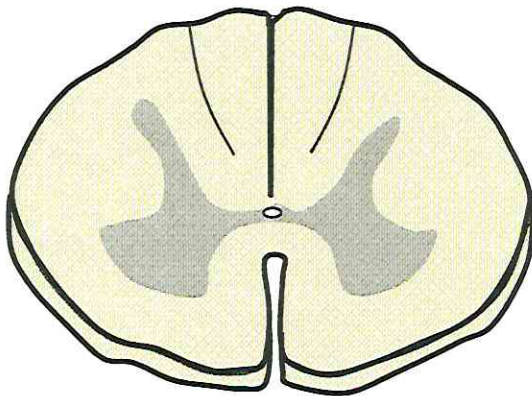


aus: M. Schünke et al., Prometheus; Kopf und Neuroanatomie,
1. Auflage 2006; Thieme, p 273 (verändert)

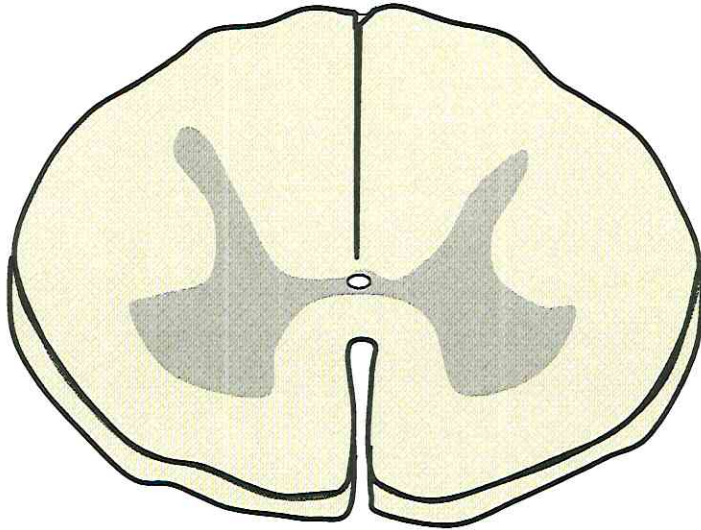




Tractus spinothalamicus lateralis et ventralis

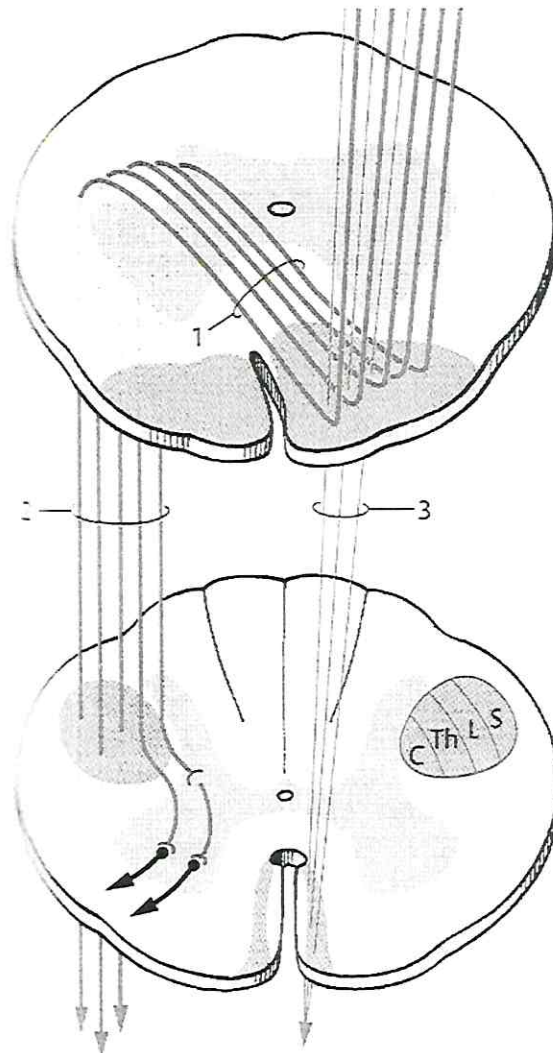


Fasciculus gracilis, Fasciculus cuneatus

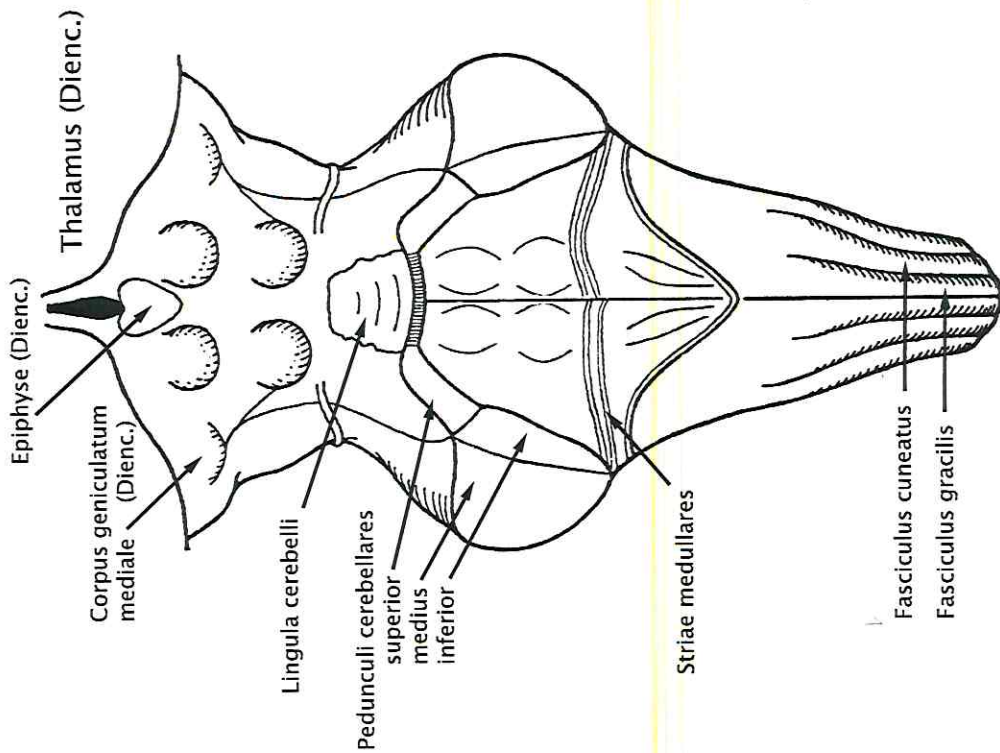


Tractus spinocerebellaris anterior et posterior

aus: W. Kahle: Nervensystem
und Sinnesorgane; 8. Aufl.
2002; Thieme; p 57+59

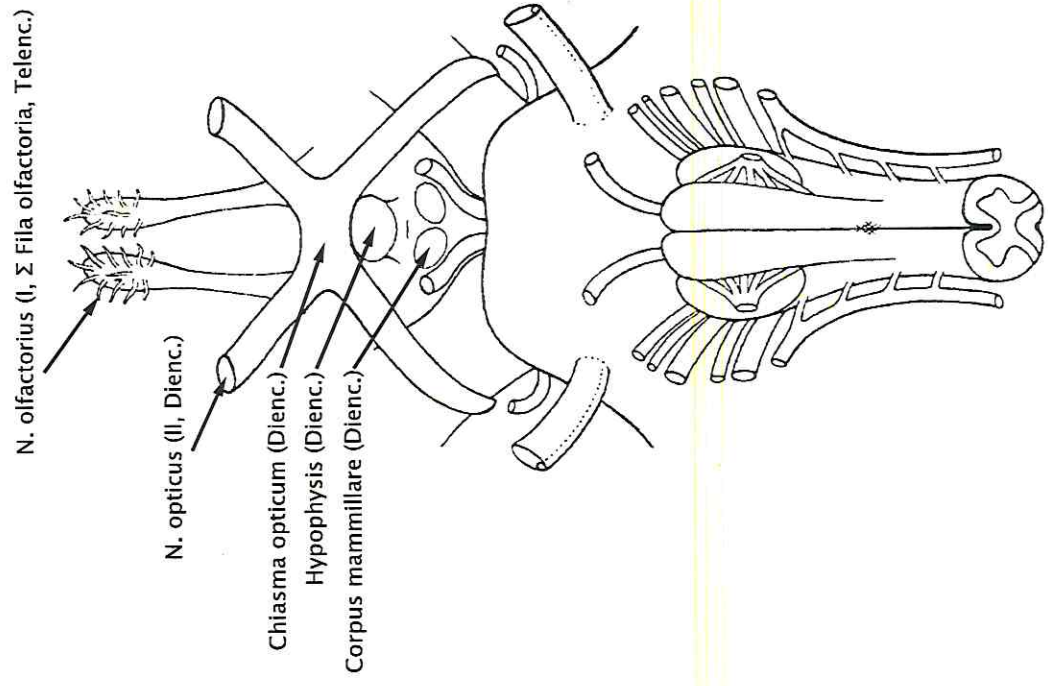


Tractus corticospinalis
anterior et lateralis
(Pyramidenbahn)

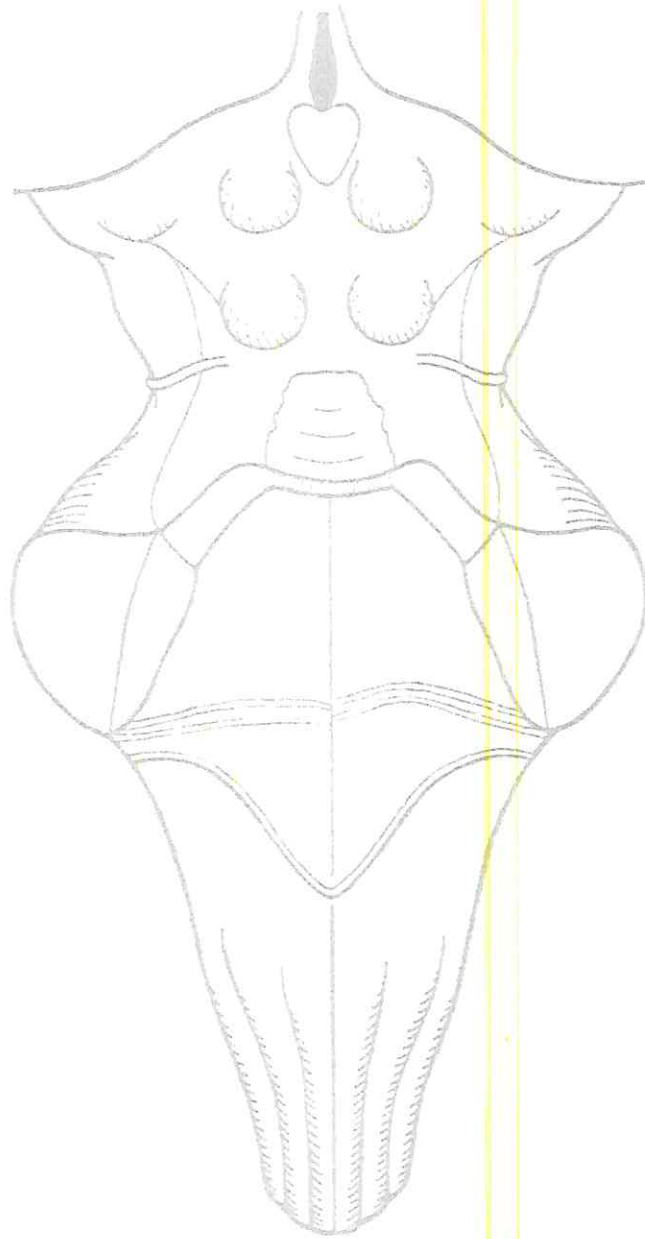


Hirnstamm

von dorsal

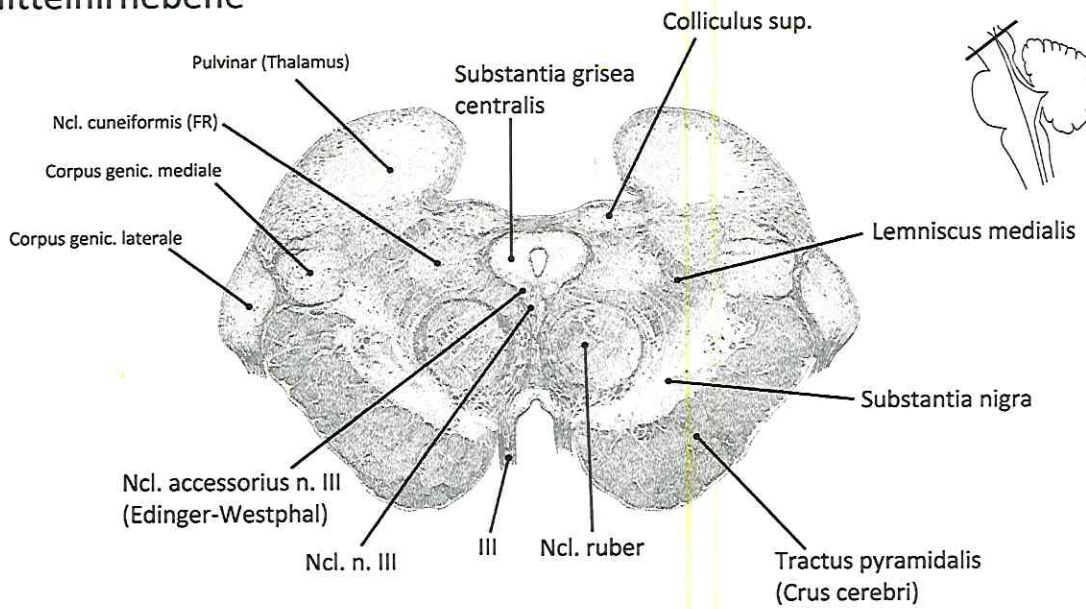


von ventral

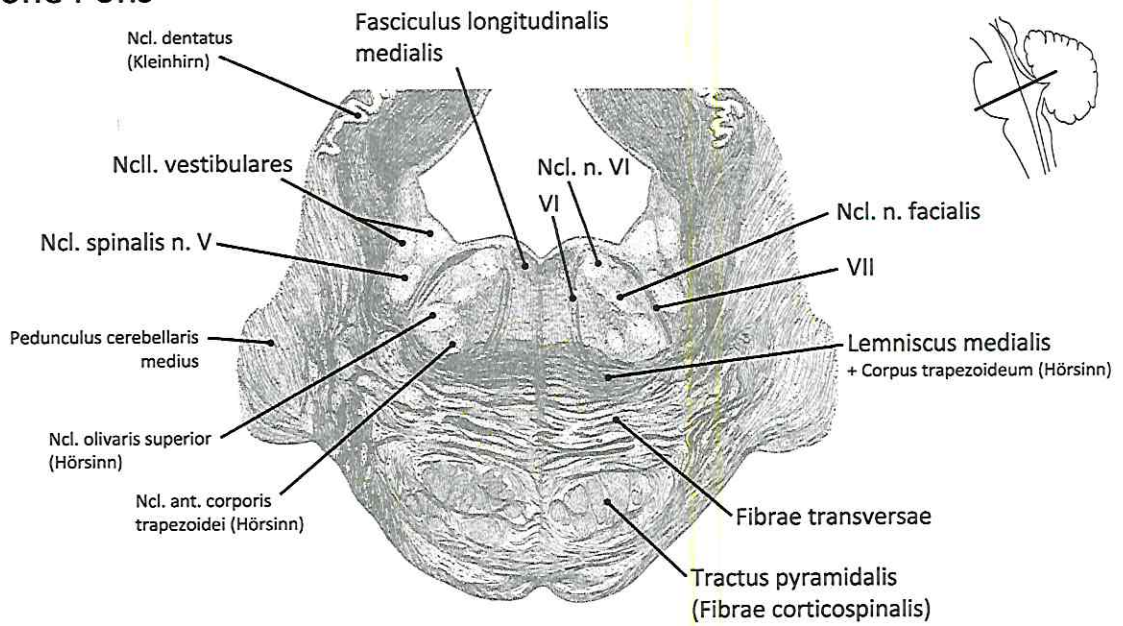


Hirnnervenkerne

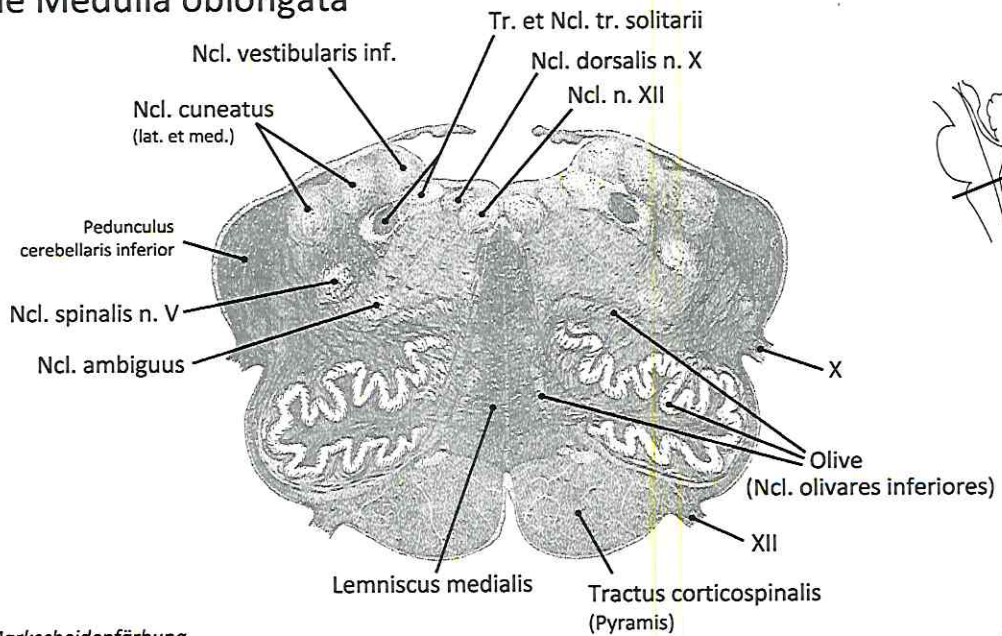
Mittelhirnebene

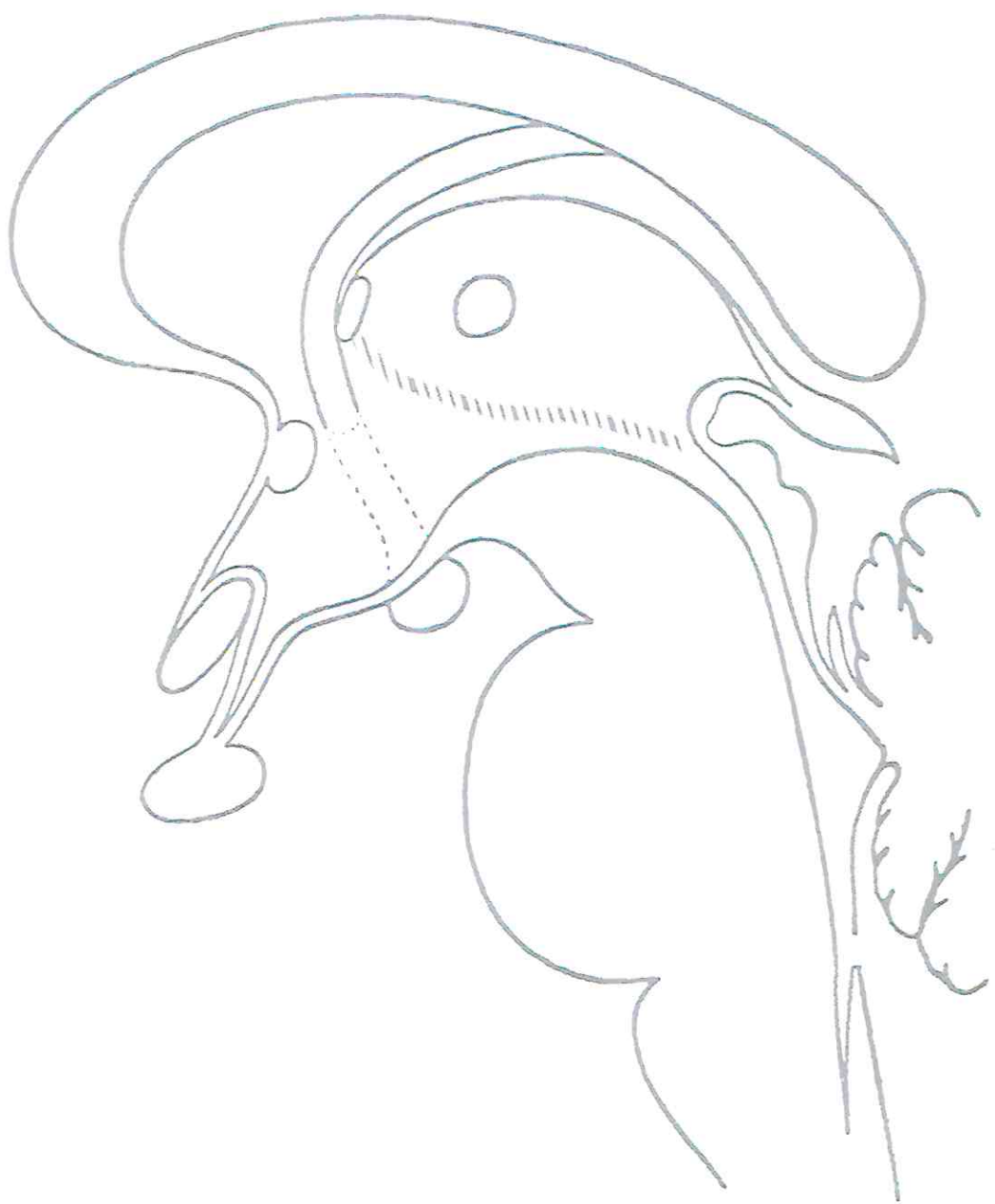


Höhe Pons



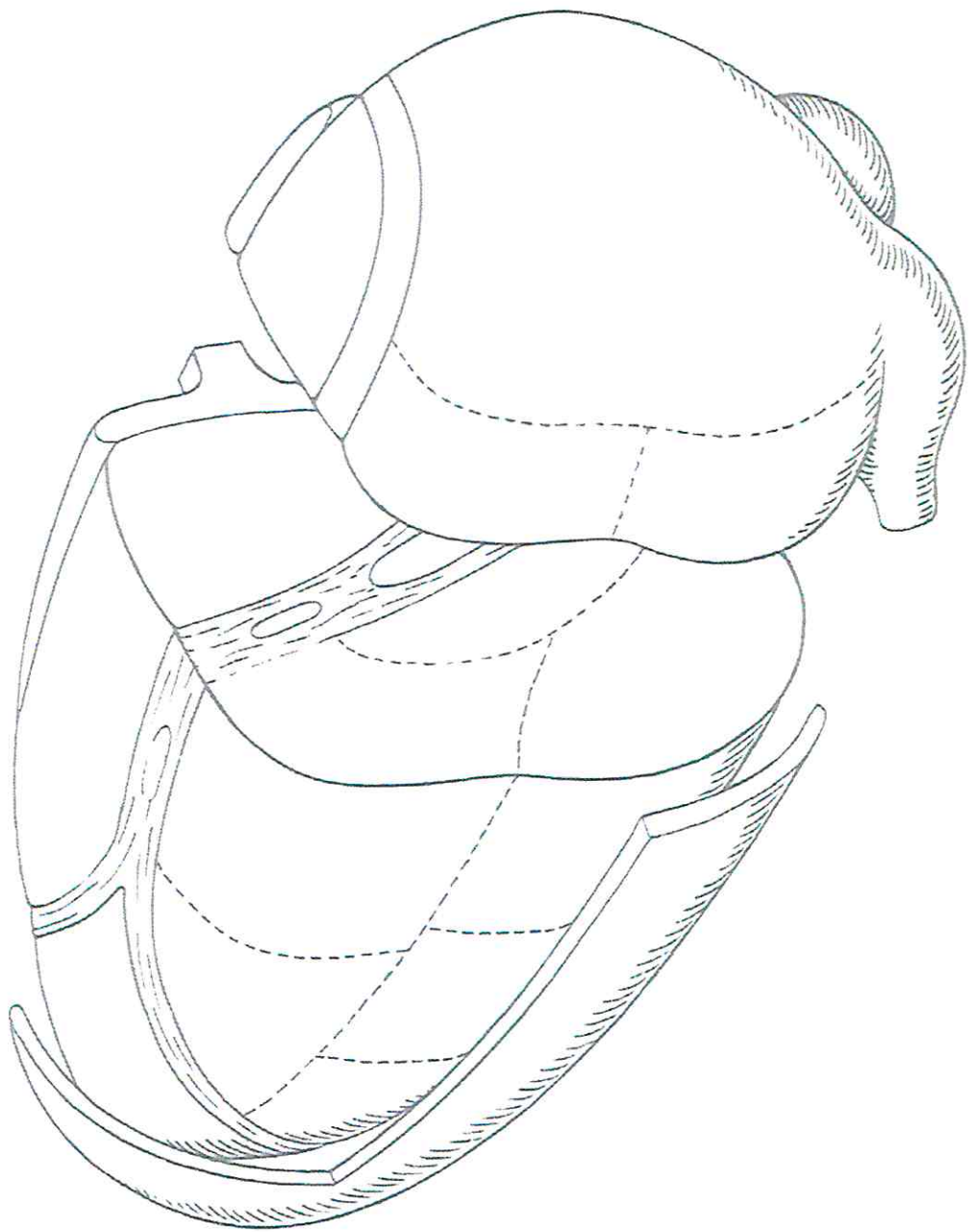
Höhe Medulla oblongata





(

)





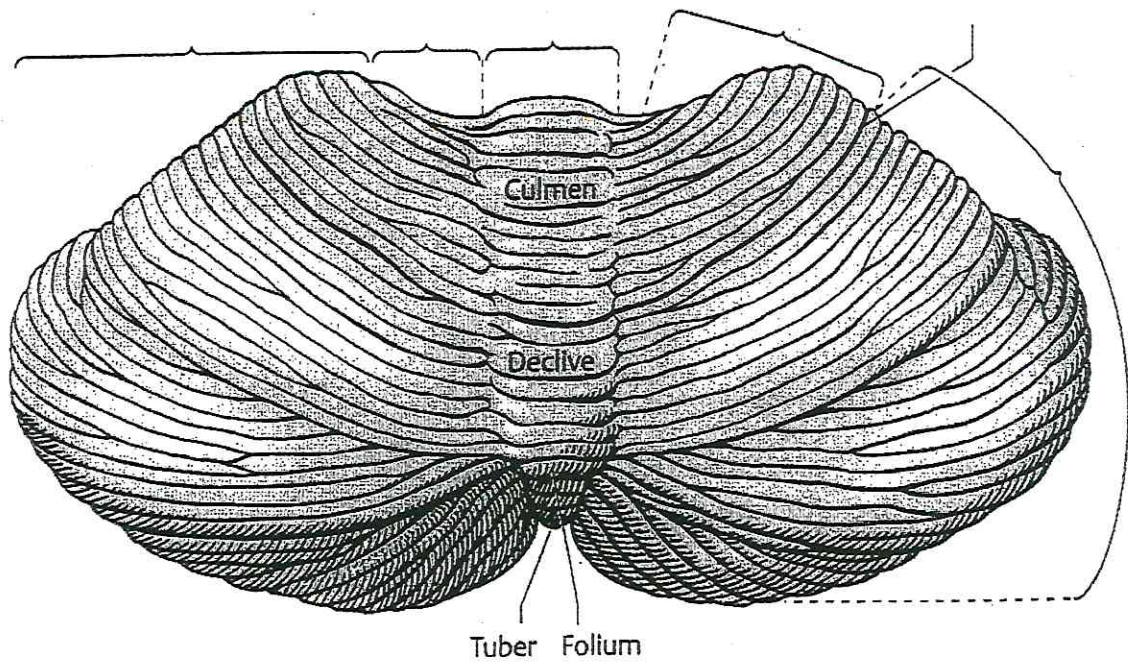


Abb. 5.1. Kleinhirn, Ansicht von oben.

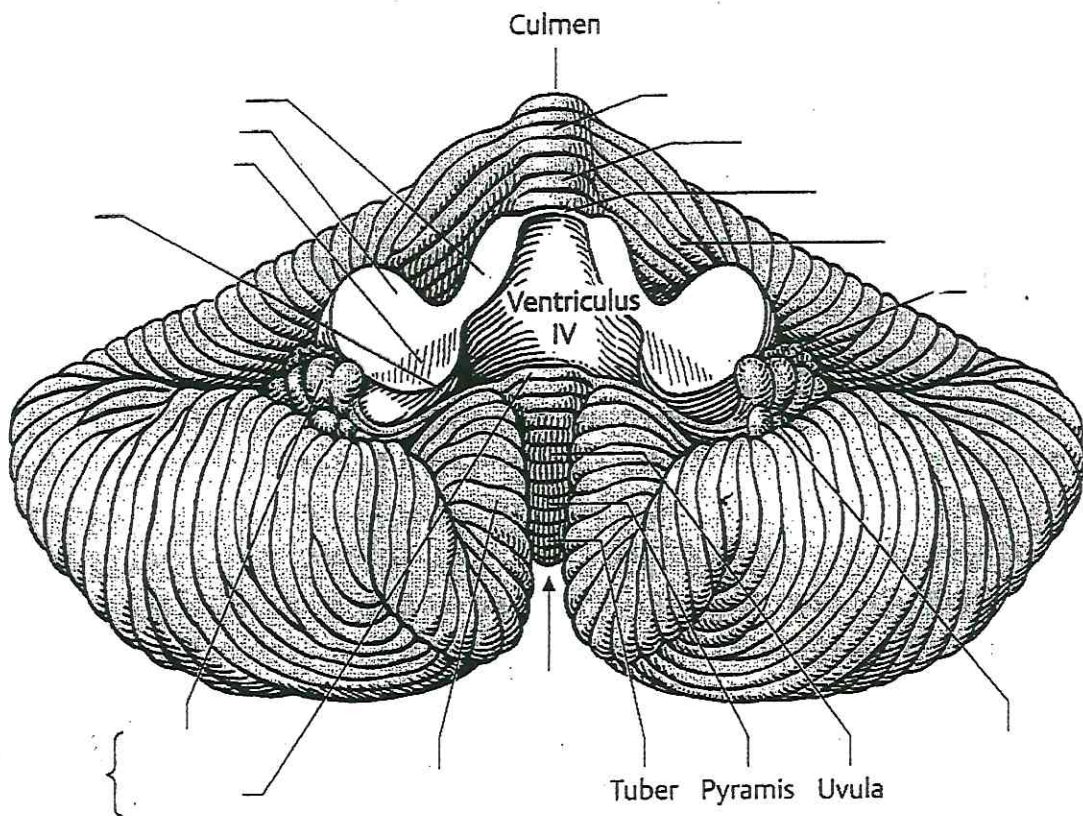
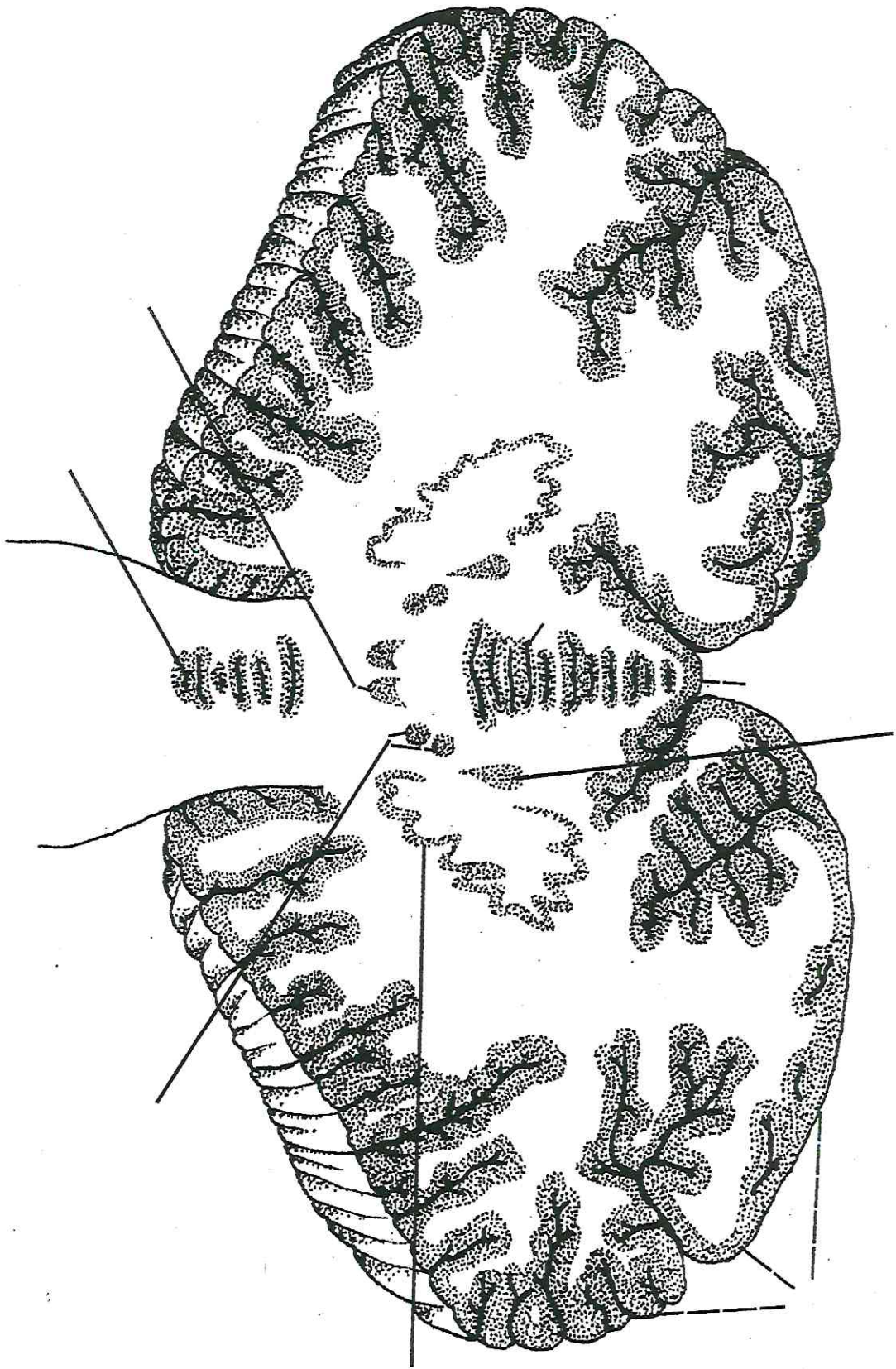
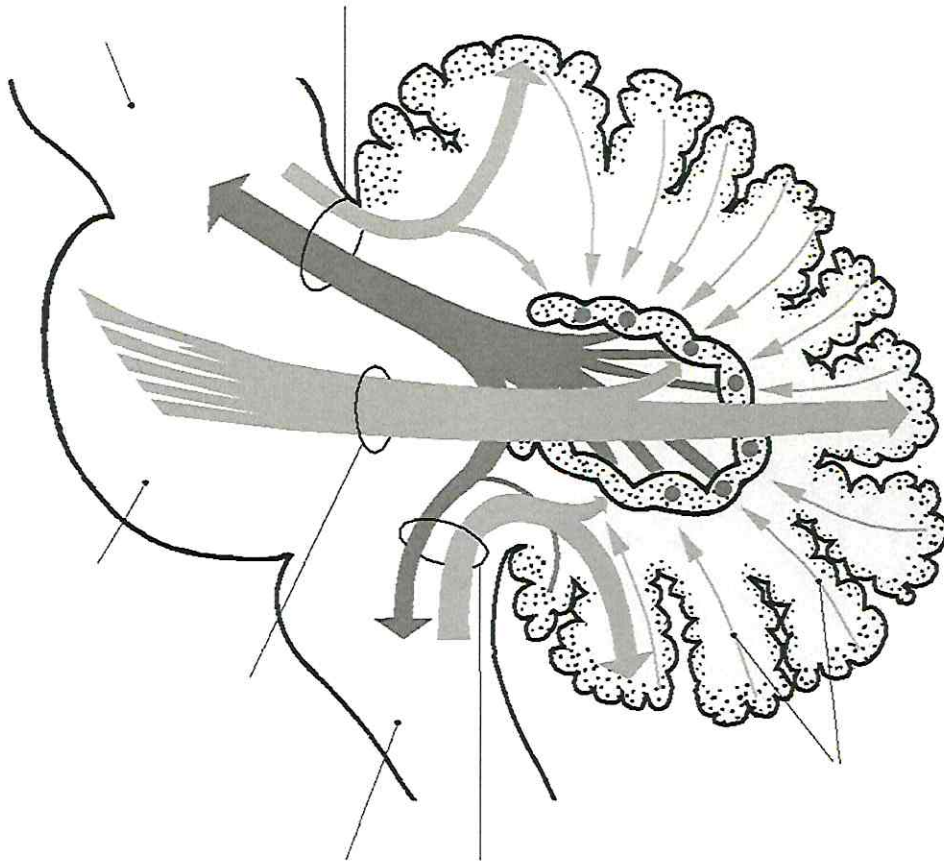
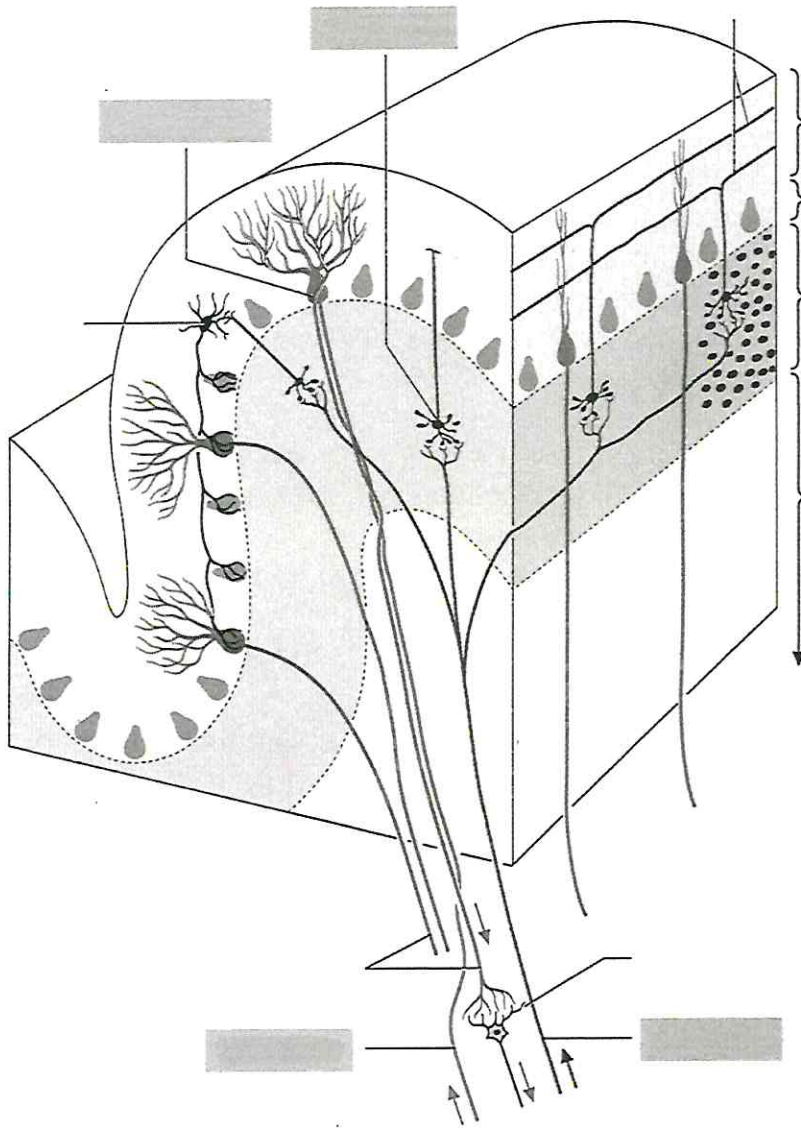
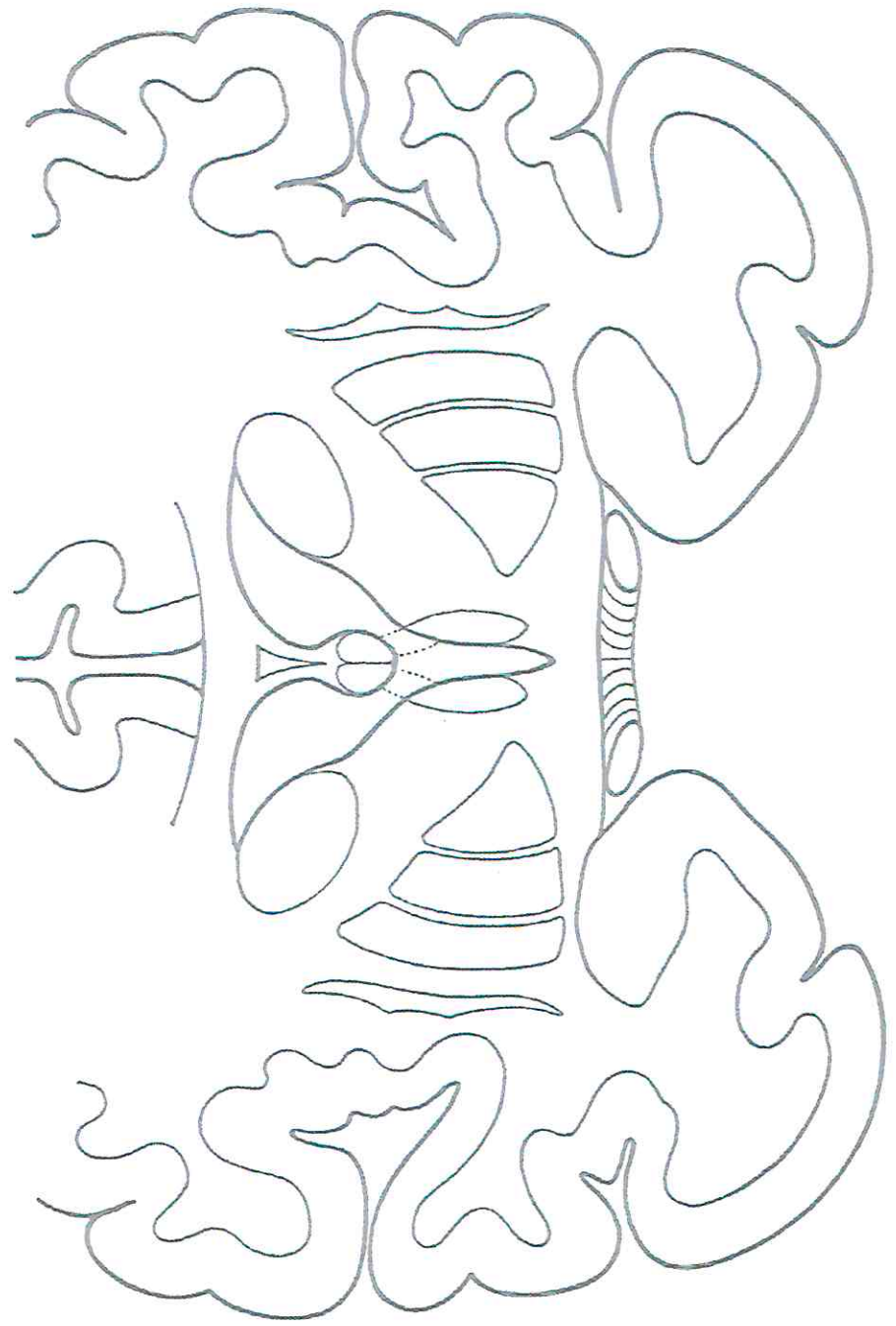


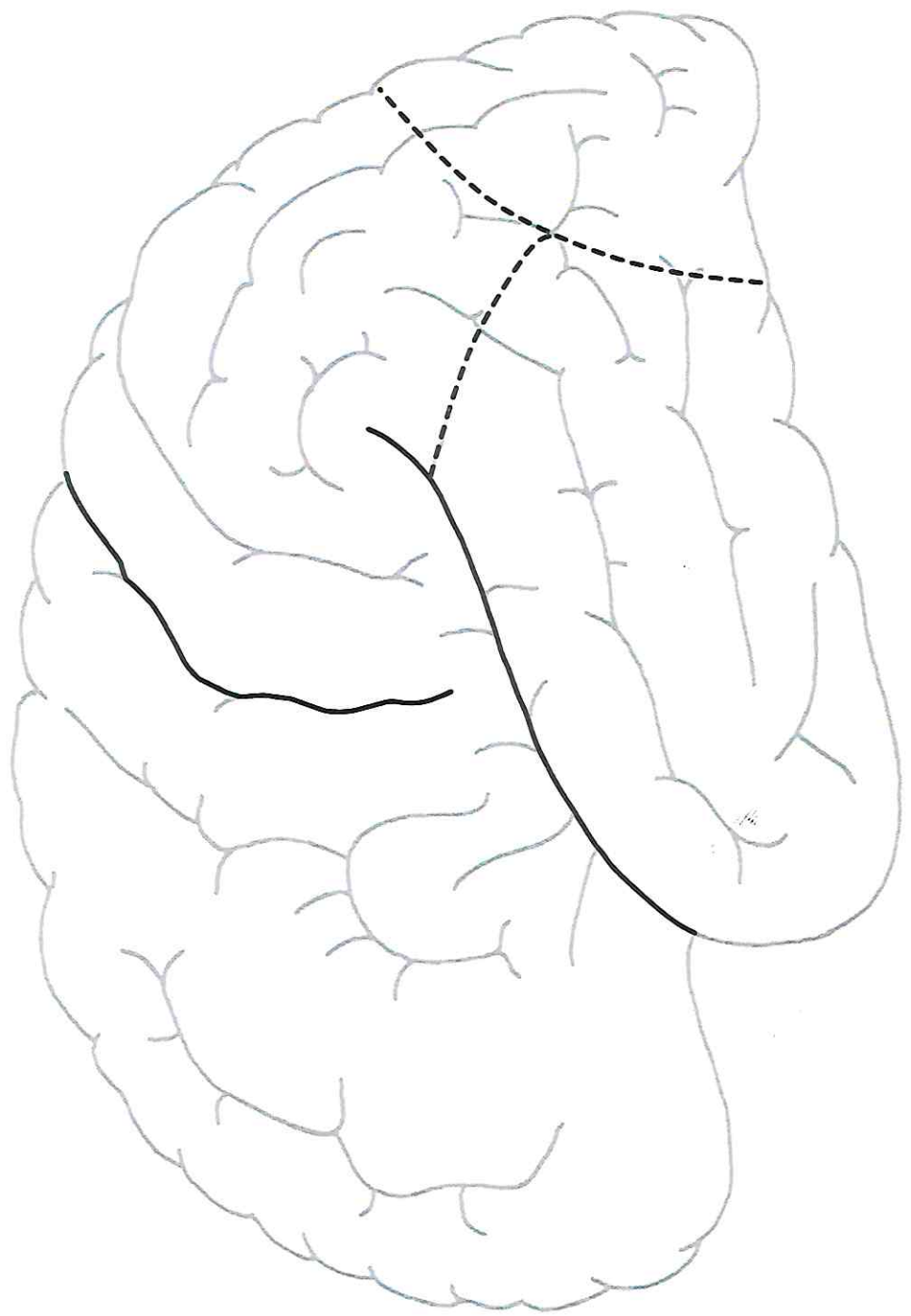
Abb. 5.2 Kleinhirn, Ansicht von unten

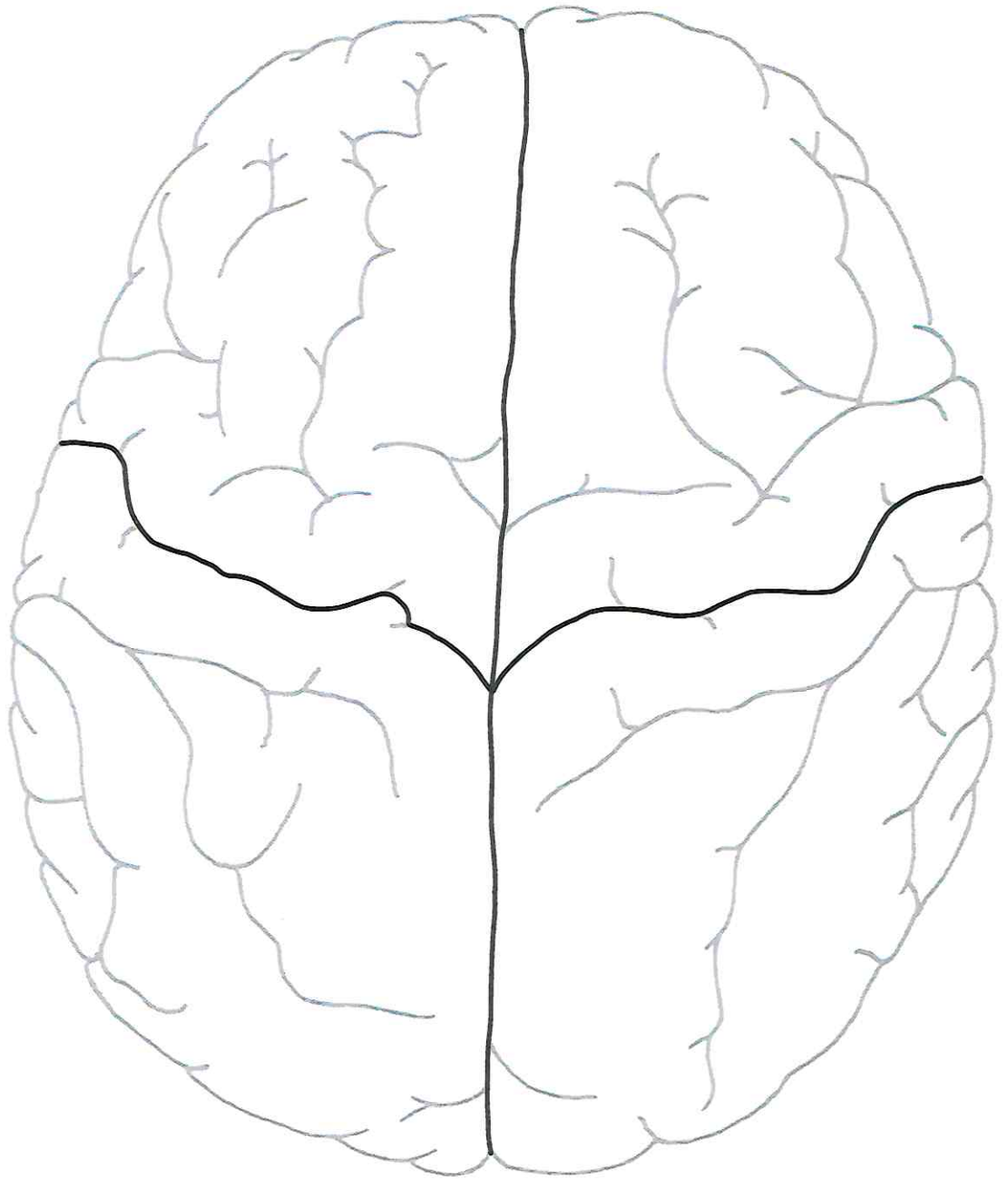


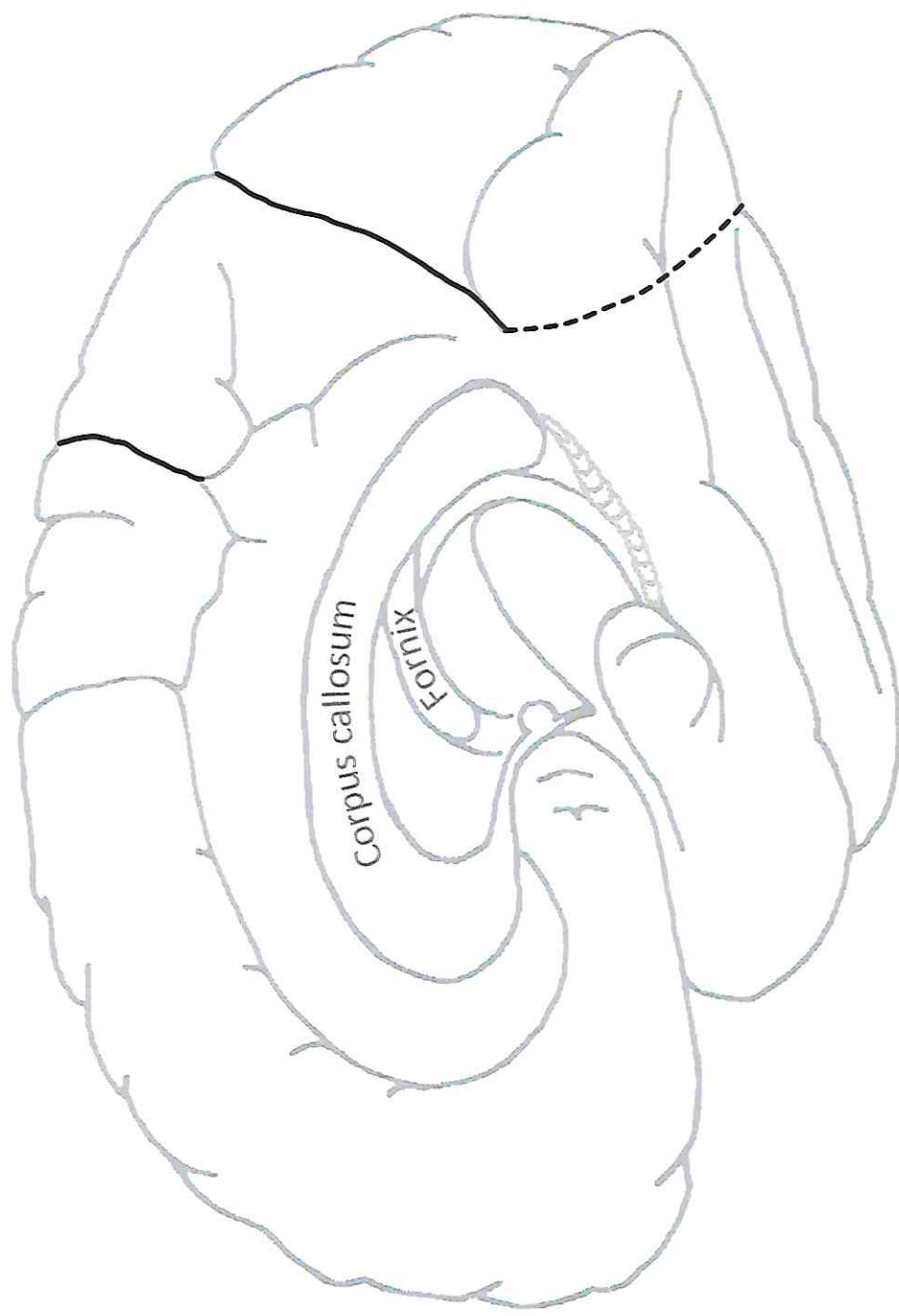






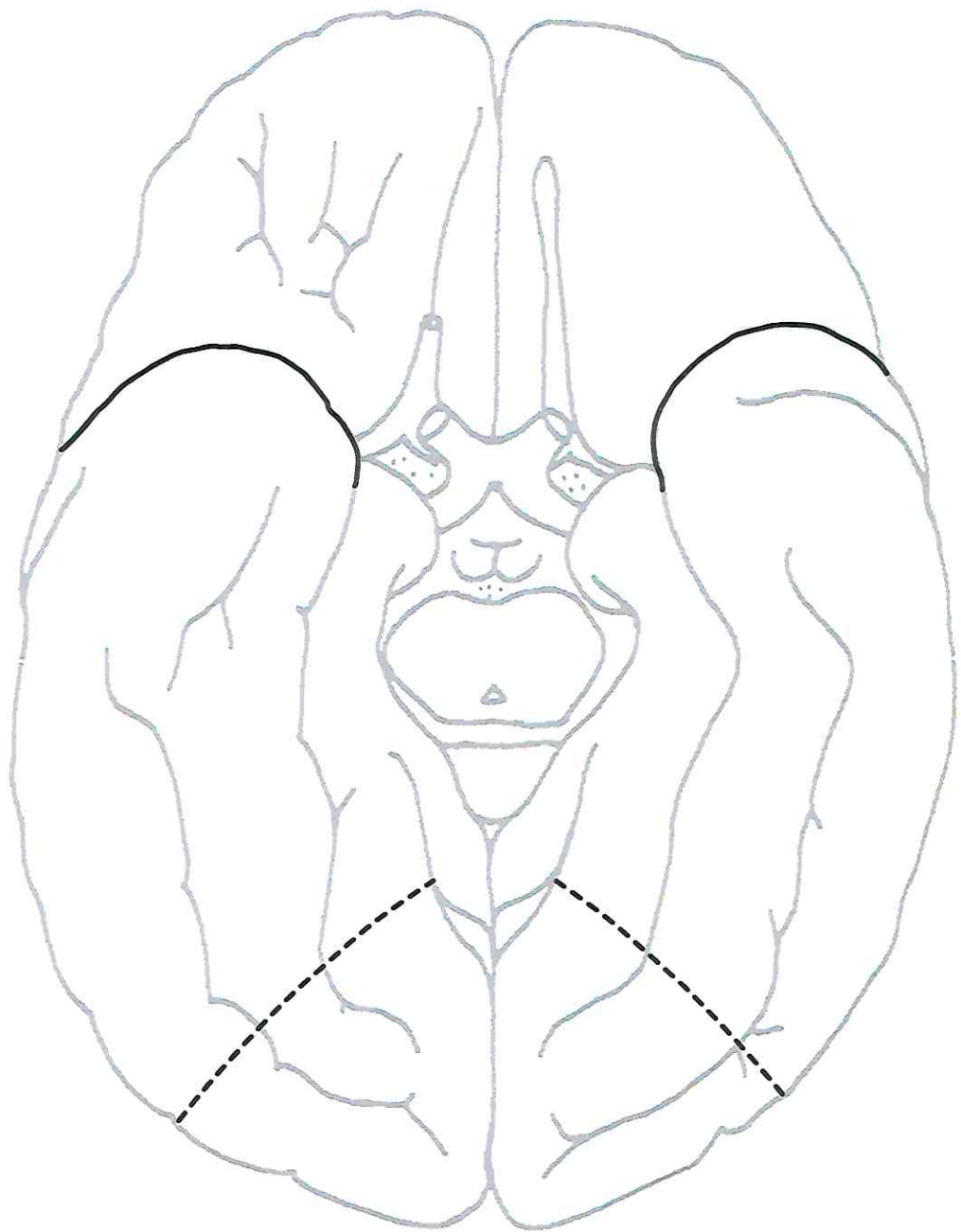






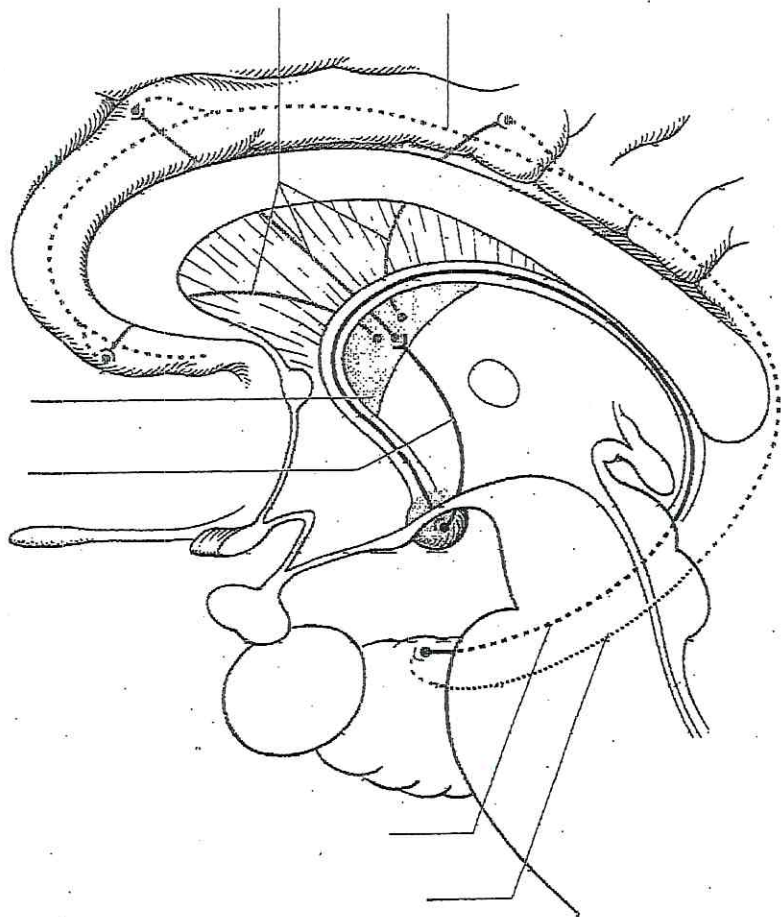
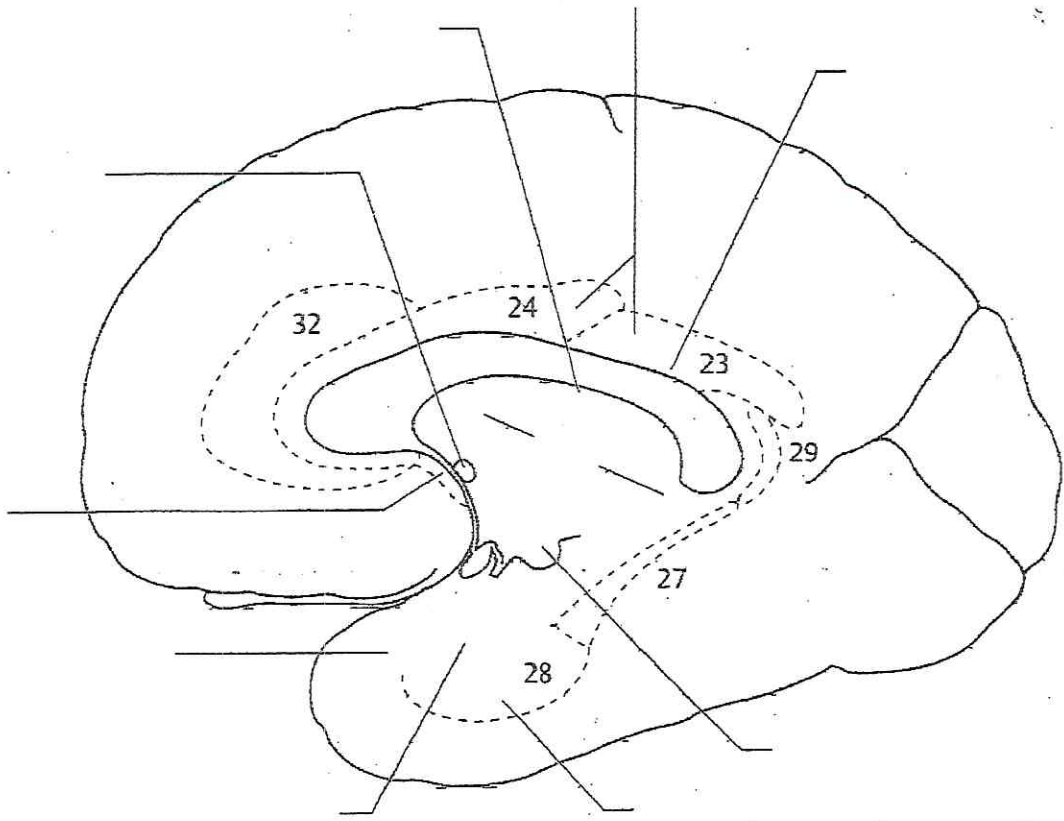
Corpus callosum

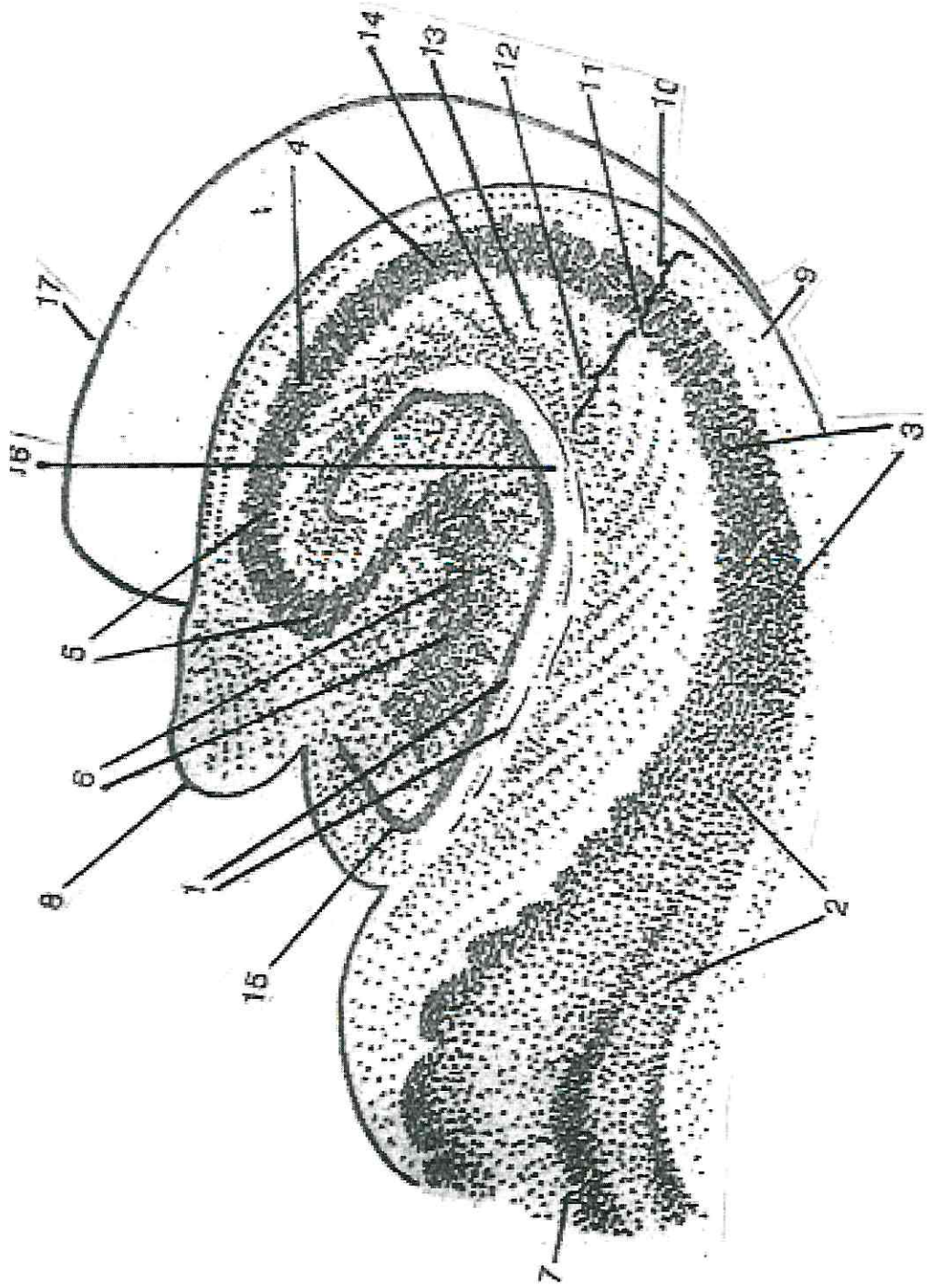
Fornix

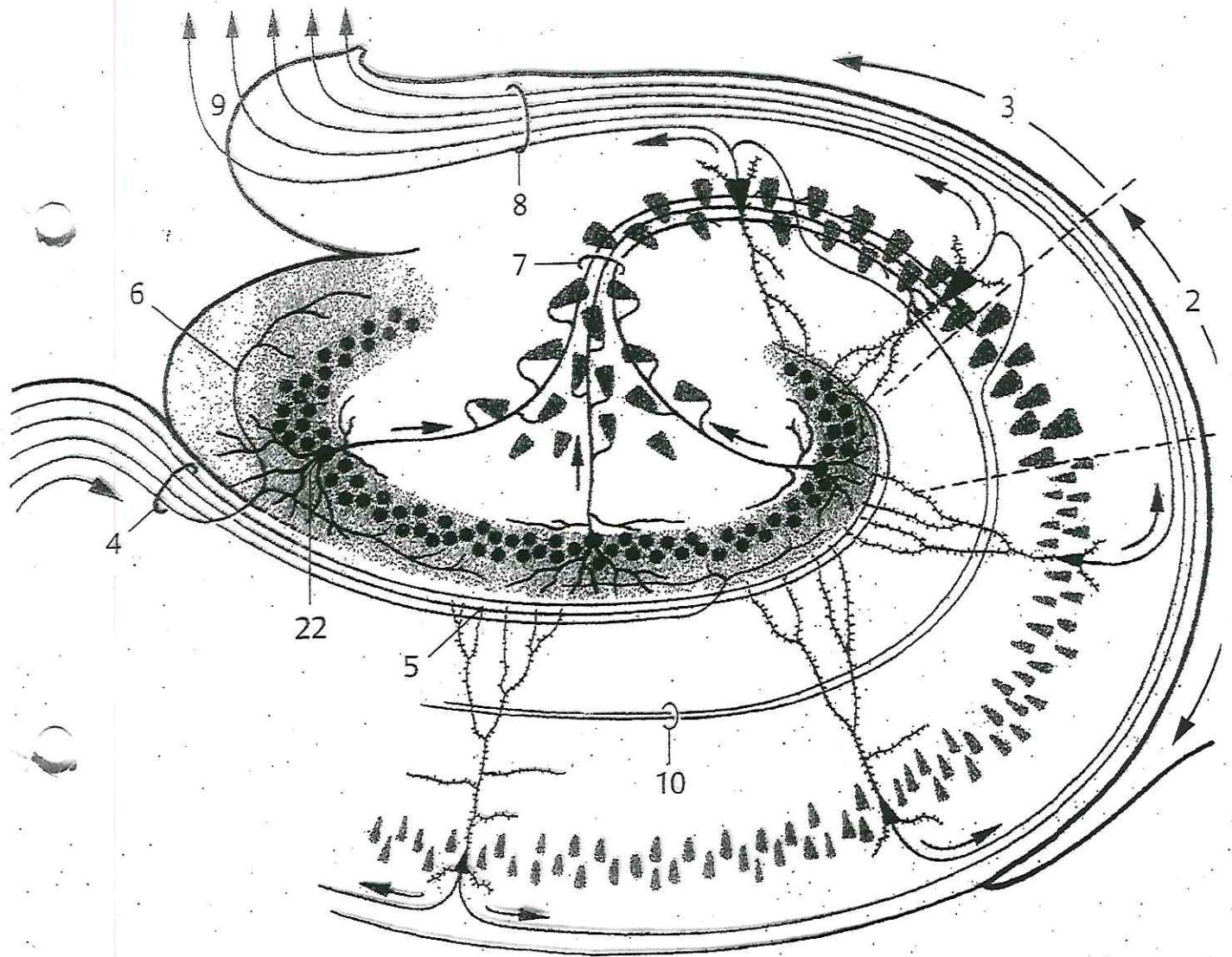


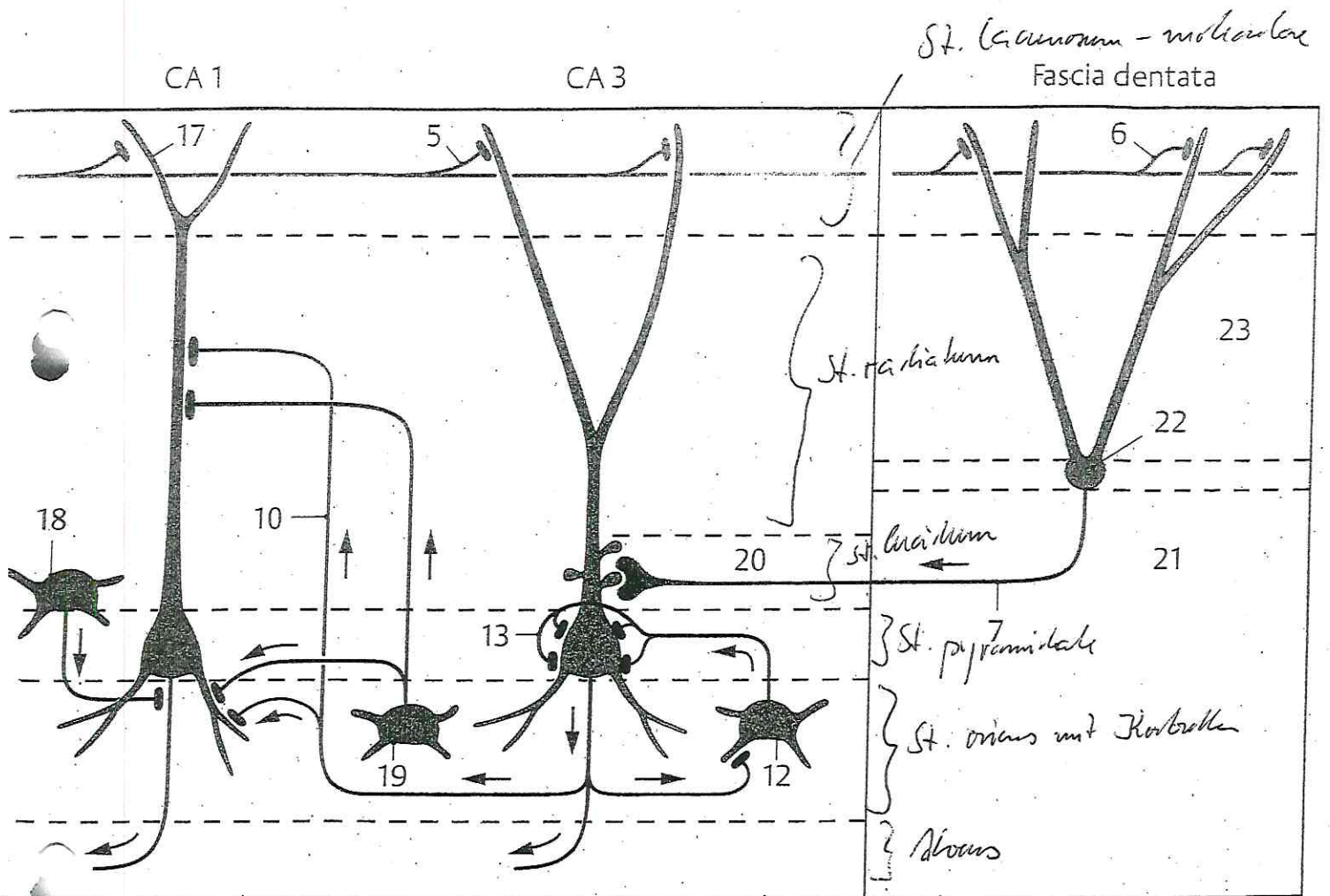
DIE GEDÄCHTNISYSTEME

	Episod. Gedächtnis	Wissens- system	prozeduales Gedächtnis
<i>Definition</i>			
<i>Ein- speicherung</i>			
<i>Ab- speicherung</i>			





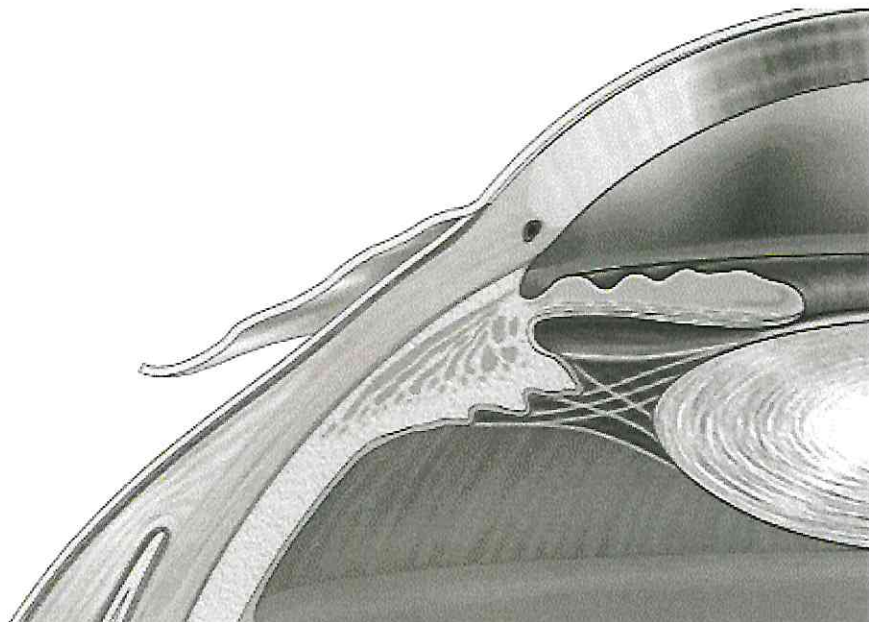




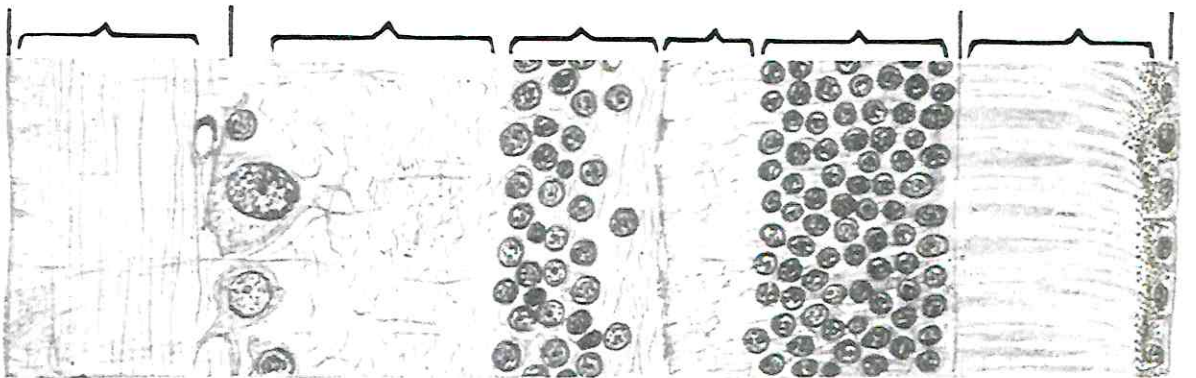
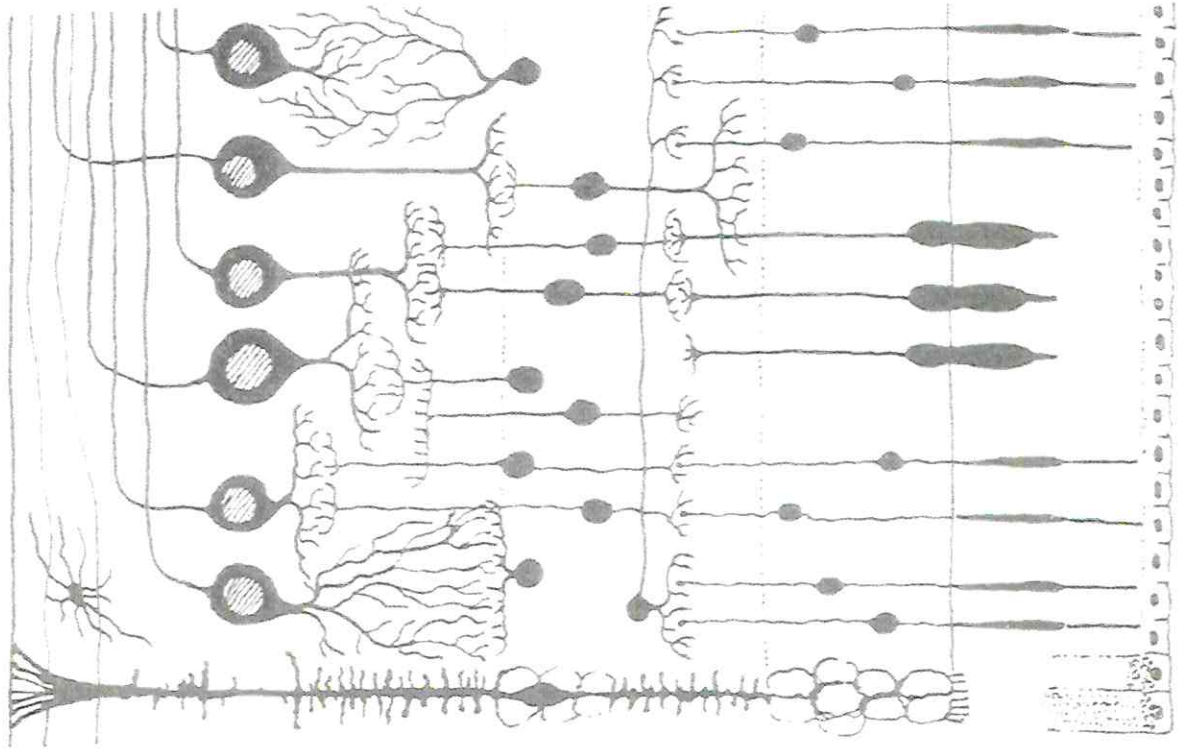
B. Neuronenschaltung im Hippocampus

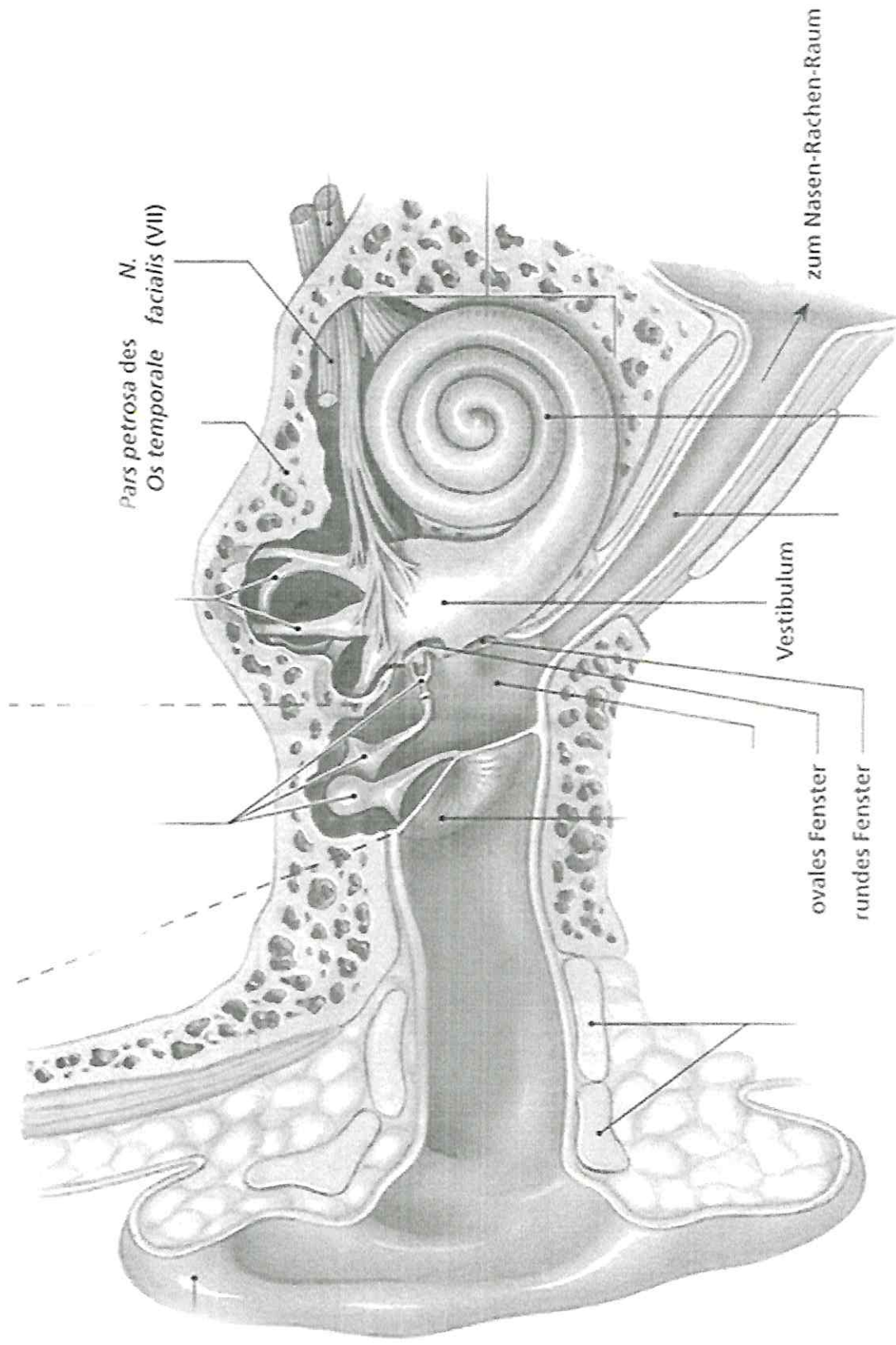


PROMETHEUS Lernatlas der Anatomie · Kopf und Neuroanatomie
M. Schünke, E. Schulte, U. Schumacher. Illustrator: K. Wesker
© Georg Thieme Verlag 2006 · Alle Rechte vorbehalten · www.thieme.de/prometheus



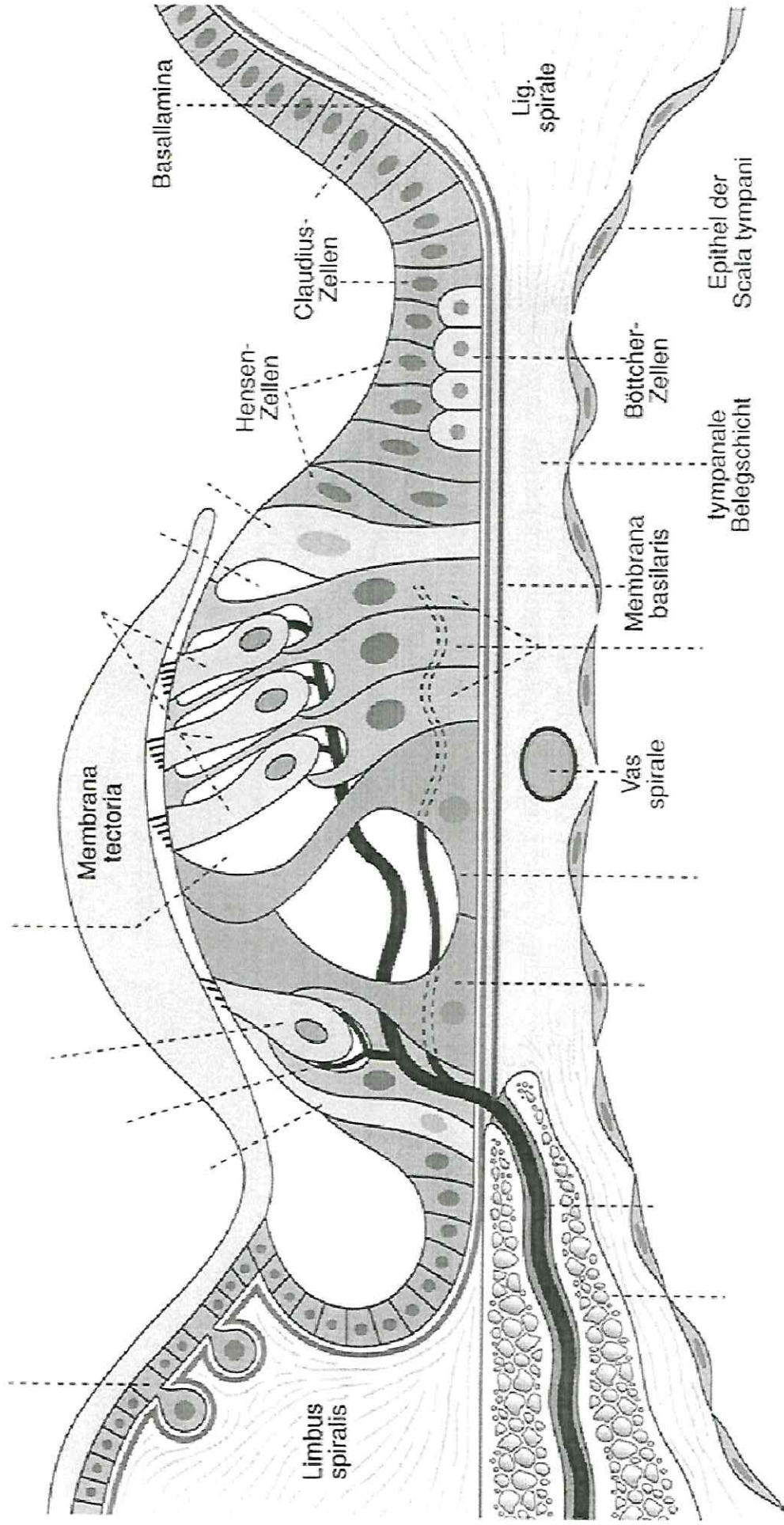
Sobotta – Atlas der Anatomie des Menschen,
23. A. 2010, © Elsevier GmbH, München



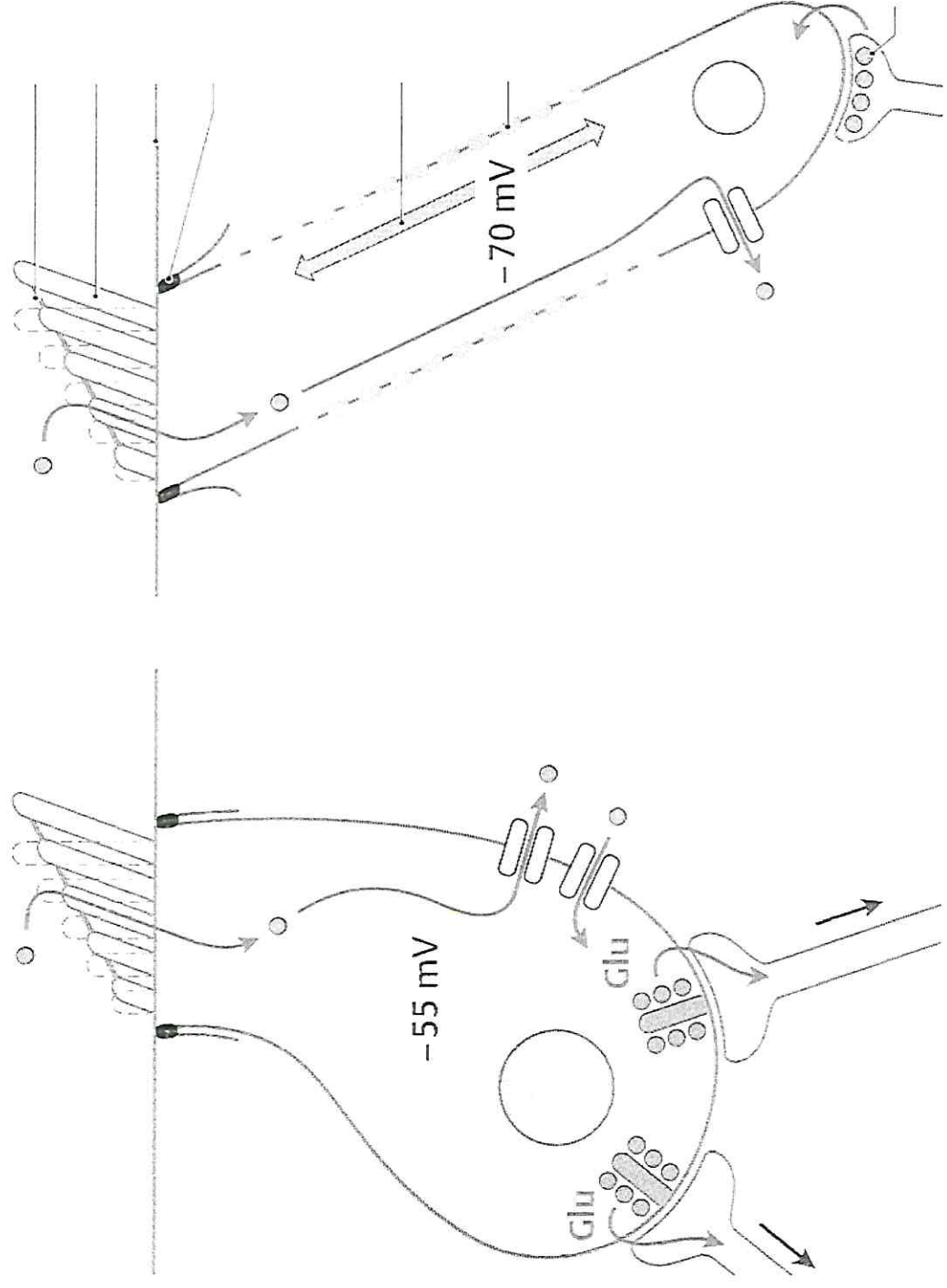


aus: F. H. Martini et al., Anatomie, 6. Auflage 2012; Pearson Studium, p 528 (verändert)

Ductus cochlearis



Scala tympani



aus: M. Gekle et al., Taschenlehrbuch Physiologie, 1. Auflage 2010; Thieme, p 664 (verändert)